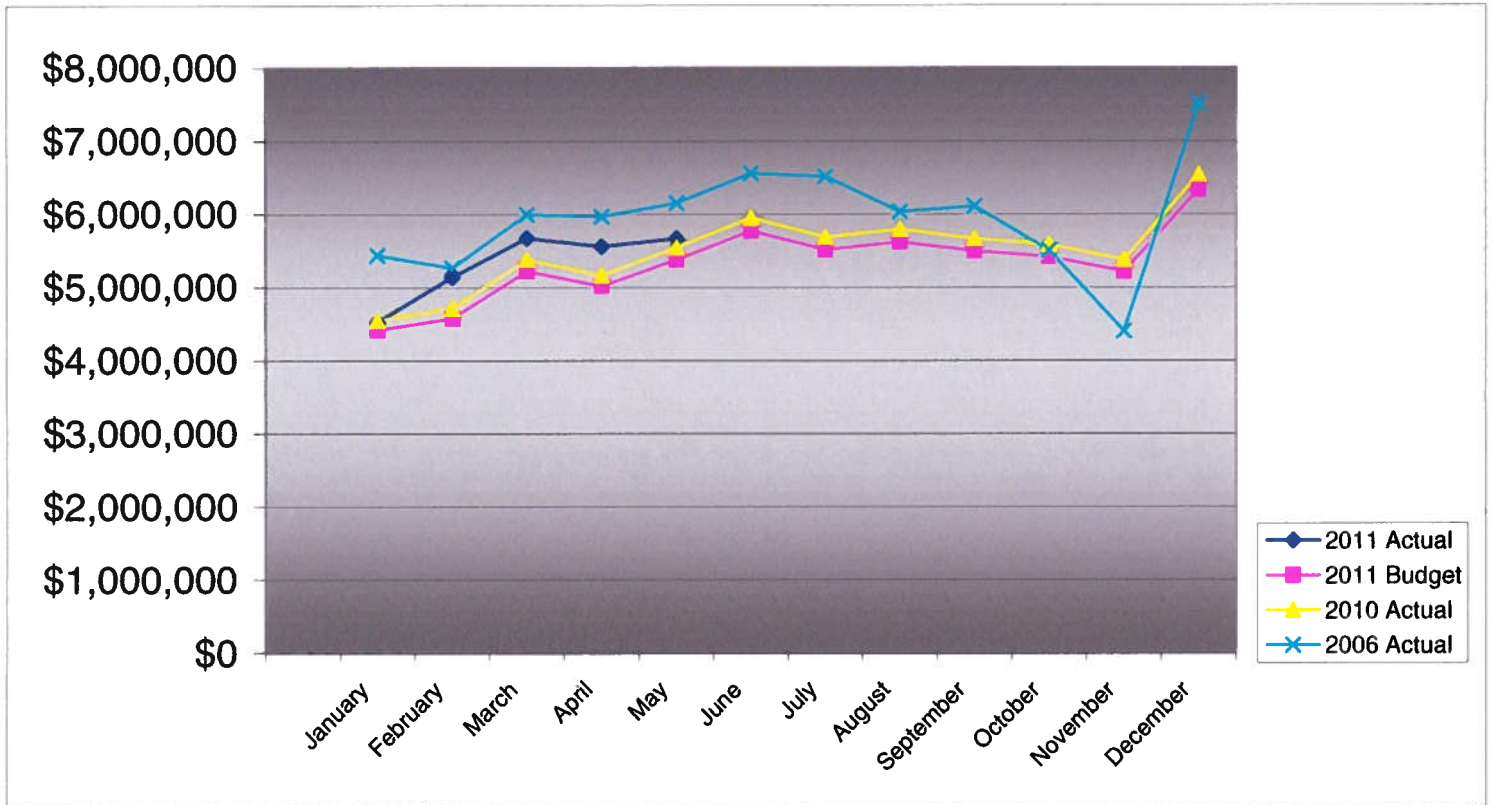


**PIKES PEAK RURAL TRANSPORTATION AUTHORITY
2011 SALES TAX COMPARISON TO BUDGET AMENDMENT #2**

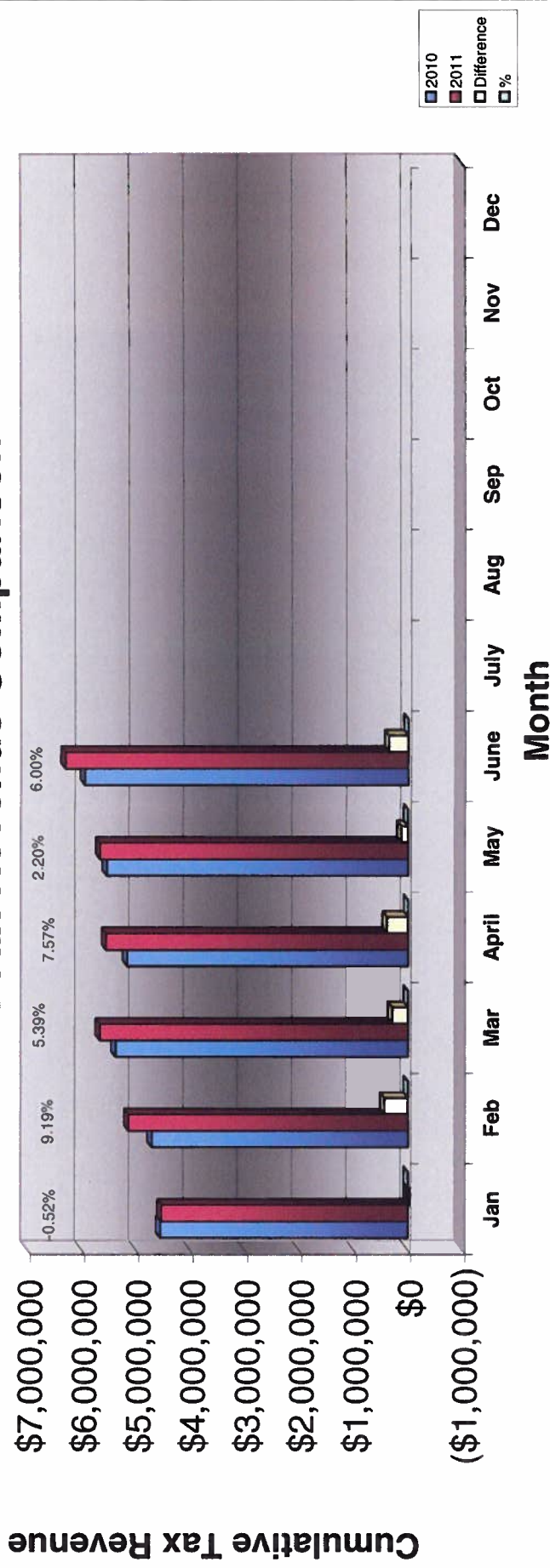
	Monthly			Cumulative Year-To-Date			2010 Actual
	Actual	Budget	Difference	Actual	Budget	Difference	
January	\$4,525,800	\$4,766,649	(\$240,849)	\$4,525,800	\$4,766,649	(\$240,849)	\$4,549,506
February	5,141,470	\$4,931,768	209,702	9,667,270	9,698,417	(31,147)	4,708,591
March	5,671,434	\$5,630,124	41,310	15,338,704	15,328,541	10,163	5,381,426
April	5,557,482	\$5,406,973	150,509	20,896,186	20,735,514	160,672	5,166,430
May	5,668,444	\$5,801,391	(132,947)	26,564,630	26,536,905	27,725	5,546,435
June	6,311,057	\$6,224,197	86,860	32,875,687	32,761,102	114,585	5,953,790
July		\$5,947,308					5,687,019
August		\$6,060,573					5,796,145
September		\$5,925,936					5,666,428
October		\$5,841,991					5,585,551
November		\$5,627,044					5,378,459
December		\$6,836,046					6,543,280
Year Total	\$32,875,687	\$69,000,000	\$114,585	\$32,875,687	\$32,761,102	\$114,585	\$65,963,060



**Pikes Peak RTA
Sales and Use Tax Comparison for 2010 and 2011**

	Jan	Feb	Mar	April	May	June	July	Aug	Sep	Oct	Nov	Dec	Total
2010 Sales & Use Tax receipts	4,549,506	4,708,591	5,381,426	5,166,430	5,546,435	5,953,790	5,687,019	5,796,145	5,666,428	5,585,551	5,378,459	6,543,280	65,963,060
2011 Sales & Use Tax receipts	4,184,896	4,759,053	5,325,019	5,259,327	5,361,158	5,825,959	5,361,158	5,825,959	5,666,428	5,585,551	5,378,459	6,543,280	30,715,412
Sales tax	340,904	382,417	346,415	298,155	307,286	485,098	307,286	485,098	485,098	485,098	485,098	485,098	2,160,275
Use tax	4,843,992	4,376,636	4,978,604	4,961,172	5,053,869	5,340,861	5,053,872	5,340,861	5,181,330	5,100,453	4,893,361	6,058,182	28,555,137
\$ change 2010 to 2011	(23,706)	432,879	290,008	391,052	122,009	357,267	0	0	0	0	0	0	1,569,509
Cumulative % change	-0.52%	4.42%	4.78%	5.50%	4.78%	5.01%	0	0	0	0	0	0	5.01%

2010 vs. 2011 PPRTA Tax Revenue Comparison





Pikes Peak Rural Transportation Authority
Revenue and Expense Summary
For Year End December 31, 2011
As of August 10, 2011
Budget Amendment July 13, 2011
Modified Cash Basis¹
(in dollars)

	Year-to-date Actual	Year-to-date Budget	Percent of YTD Budget Complete	Annual Budget Including Carryover	Actual Difference from Budget	Percent of Budget Complete
Revenue						
Tax Collections:						
Capital:						
City of Colorado Springs	11,273,152	11,238,348	101%	23,679,539	(12,406,387)	48%
El Paso County	6,545,652	6,453,283	101%	13,597,261	(7,051,609)	48%
	17,818,804	17,691,630	101%	37,276,800	(19,457,996)	48%
Maintenance:						
Town of Green Mountain Falls	18,313	18,182	101%	38,310	(19,997)	48%
City of Manitou Springs	117,985	117,143	101%	246,823	(128,838)	48%
City of Colorado Springs	8,549,673	8,488,654	101%	17,885,849	(9,336,176)	48%
El Paso County	2,650,502	2,631,585	101%	5,544,829	(2,894,327)	48%
Town of Ramah	2,767	2,747	101%	5,789	(3,022)	48%
	11,339,240	11,258,311	101%	23,721,600	(12,382,360)	48%
Public Transportation	3,239,783	3,216,659	101%	6,777,600	(3,537,817)	48%
Administration allocation of Tax Revenue	267,500	267,500	100%	535,000	(267,500)	50%
Reserve portion of Revenue	219,500	327,002	67%	689,000	(469,500)	32%
Baptist Road RTA allocation of Tax Revenue	(9,140)	0	N/A	0	(9,140)	N/A
Total Tax Revenue	32,875,687	32,761,102	100%	69,000,000	(36,124,313)	48%
Other Revenue Sources:						
Public Transportation fare and advertising revenue	1,592,371	1,365,000	117%	2,730,000	(1,137,629)	58%
Interest Earnings	101,047	85,000	119%	170,000	(68,953)	59%
Gross Revenue	34,569,105	34,211,102	101%	71,900,000	(37,330,895)	48%
Cost of Tax collection	(77,195)	(120,833)	64%	(290,000)	(212,805)	27%
Net Revenue	34,491,910	34,090,269	101%	71,610,000	(37,118,090)	48%
Expenditures						
Administrative	237,799	312,083	76%	535,000	297,201	44%
Public Transportation	3,201,063	9,184,751	35%	15,745,287	12,544,224	20%
Maintenance						
Town of Green Mountain Falls	11,523	22,776	51%	40,612	29,089	28%
City of Manitou Springs	12,540	237,726	5%	423,892	411,352	3%
City of Colorado Springs	9,192,634	12,384,954	74%	22,083,775	12,891,141	42%
El Paso County	1,081,953	3,538,062	31%	6,308,766	5,226,813	17%
Town of Ramah	1,143	5,762	20%	10,275	9,132	11%
	10,299,793	16,189,280	64%	28,867,320	18,567,527	36%

	Year-to-date Actual	Year-to-date Budget	Percent of YTD Budget Complete	Annual Budget Including Carryover	Actual Difference from Budget	Percent of Budget Complete
Capital						
<i>Town of Green Mountain Falls</i>						
Ute Pass Widening	0	0	N/A	0	0	N/A
<i>City of Manitou Springs</i>						
Manitou Ave Improvements	10,338	342,868	3%	611,372	601,034	2%
<i>City of Colorado Springs</i>						
S. Metro Accessibility, Phase I	11,262,863	11,227,381	100%	20,019,692	8,756,829	56%
Constitution/Circle Drive Improvements	0	2,498	0%	4,454	4,454	0%
Congestion/Incident Mgmt Signal Improvement	12,400	365,005	3%	650,845	638,445	2%
Powers Blvd Right of Way Protection	0	128,482	0%	229,098	229,098	0%
Roadway Safety and Traffic Operations	616,731	1,179,106	52%	2,102,480	1,485,749	29%
Vincent Drive Bridge	32,784	1,389,212	2%	2,477,122	2,444,338	1%
Pikes Peak Greenway Improvements		222,524	0%	396,785	396,785	0%
Woodmen Rd Widening & Interchange	7,228,855	5,984,430	121%	10,670,917	3,442,062	68%
On-Street Bikeway Improvements	45,630	266,539	17%	475,270	429,640	10%
30th Street Corridor Safety Improvements		22,852	0%	40,748	40,748	0%
Vincent Drive Extension	3,675,940	3,315,582	111%	5,912,058	2,236,118	62%
Fillmore Street Corridor (I-25 to Centennial)	9,992	448,653	2%	800,000	790,008	1%
Austin Bluffs (Nevada to Academy)	292,997	351,223	83%	626,270	333,273	47%
Austin Bluffs (Barnes to Old Farm)	285,367	251,811	113%	449,007	163,640	64%
Hancock Avenue Bridge	650,891	957,913	68%	1,708,068	1,057,177	38%
	24,114,450	26,113,212	92%	46,562,814	22,448,364	52%
<i>El Paso County</i>						
County Line Road Upgrade		1,311,872	0%	2,339,217	2,339,217	0%
Hodgen Rd upgrade to Arterial	2,420,995	7,799,612	31%	13,907,592	11,486,597	17%
Baptist Rd Widening (I-25 to Tari Dr.)		114,927	0%	204,928	204,928	0%
Marksheffel Road Widening & Extension	4,080,326	5,279,975	77%	9,414,793	5,334,467	43%
S. Metro Accessibility	38,329	29,701	129%	52,960	14,631	72%
Meridian Rd Ext. (Woodmen to Rex Drive)	747,315	1,503,657	50%	2,681,191	1,933,876	28%
Meridian Rd Ext. (Falcon to US 24)		187,500	0%	334,333	334,333	0%
Baptist Rd (Mitchell to I-25)		112,163	0%	200,000	200,000	0%
Baptist Rd RR Crossing		83,173	0%	148,306	148,306	0%
Stapleton Rd (Eastonville to US 24)	518,291	1,131,778	46%	2,018,088	1,499,797	26%
	7,805,256	17,554,358	44%	31,301,408	23,496,152	25%
Total Capital Expenditures	31,930,044	44,010,437	73%	78,475,594	46,545,550	41%
Total Projects and Transportation expenses	45,430,900	69,384,468	65%	123,088,201	77,657,301	37%
Total Expenditures	45,668,699	69,696,551	66%	123,623,201	77,954,502	37%
Revenue Over/(Under) Expenditures	(11,176,789)	(35,606,283)	31%	(52,013,201)	(115,072,592)	21%
Carryover		52,602,201		52,602,201	52,602,201	
Net Activity including prior year carryover	(11,176,789)	16,995,918	-66%	589,000	(62,470,391)	-21%
Reserves:						
Board Appropriation of reserves		0	N/A		0	N/A
Reserve balance adjustment to 10% of budget	(219,500)	(327,002)	67%	(689,000)	(469,500)	32%
Replenish Reserve for prior year appropriation		100,000	0%	100,000	100,000	0%
Net Reserve balance adjustment	(219,500)	(227,002)	97%	(589,000)	(369,500)	37%
Net Activity Less Reserve adjustment	(\$11,396,289)	\$16,768,917	-68%	\$0	(\$11,396,289)	N/A

¹ Tax revenues from the State are received two months after the reported month. This statement includes June sales and use tax received in August.



Pikes Peak Rural Transportation Authority
Balance Sheet
As of August 10, 2011

Assets	<u>8/10/2011</u>	<u>12/31/2010</u>
Cash and Investments	47,565,781	56,954,657
Accounts Receivable	<u>0</u>	<u>12,185,390</u>
Total Assets	<u><u>47,565,781</u></u>	<u><u>69,140,047</u></u>
Liabilities		
Accounts Payable	<u>841,368</u>	<u>11,238,845</u>
Total Liabilities	<u>841,368</u>	<u>11,238,845</u>
Fund Balance/Net Assets	57,901,202	57,901,202
Current year earnings/loss	<u>(11,176,789)</u>	
Total Fund Balance/Net Assets	46,724,413	<u>57,901,202</u>
Total Fund Balance and Liabilities	<u><u>47,565,781</u></u>	<u><u>69,140,047</u></u>