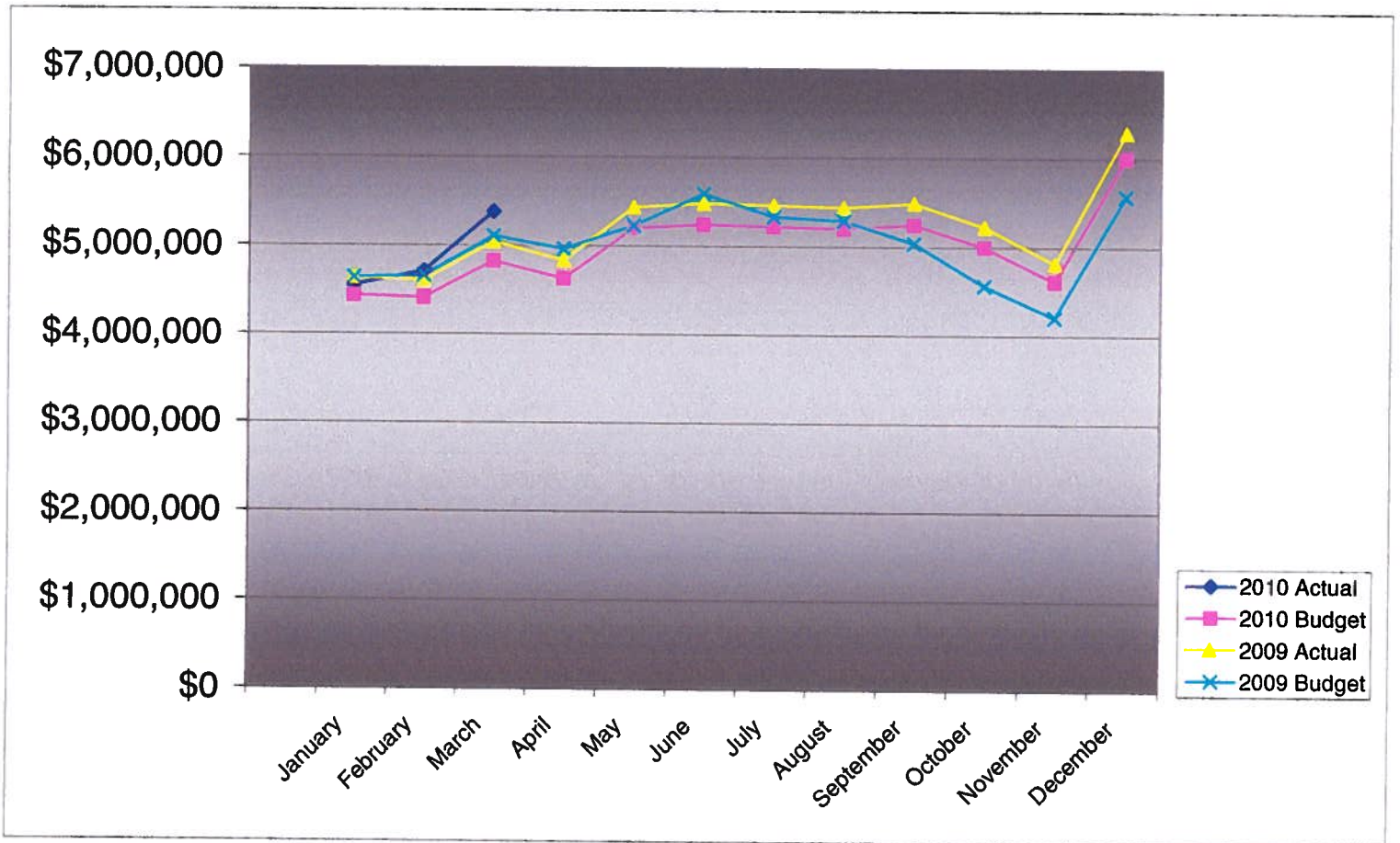


**PIKES PEAK RURAL TRANSPORTATION AUTHORITY
2010 SALES TAX COMPARISON TO AMENDED BUDGET**

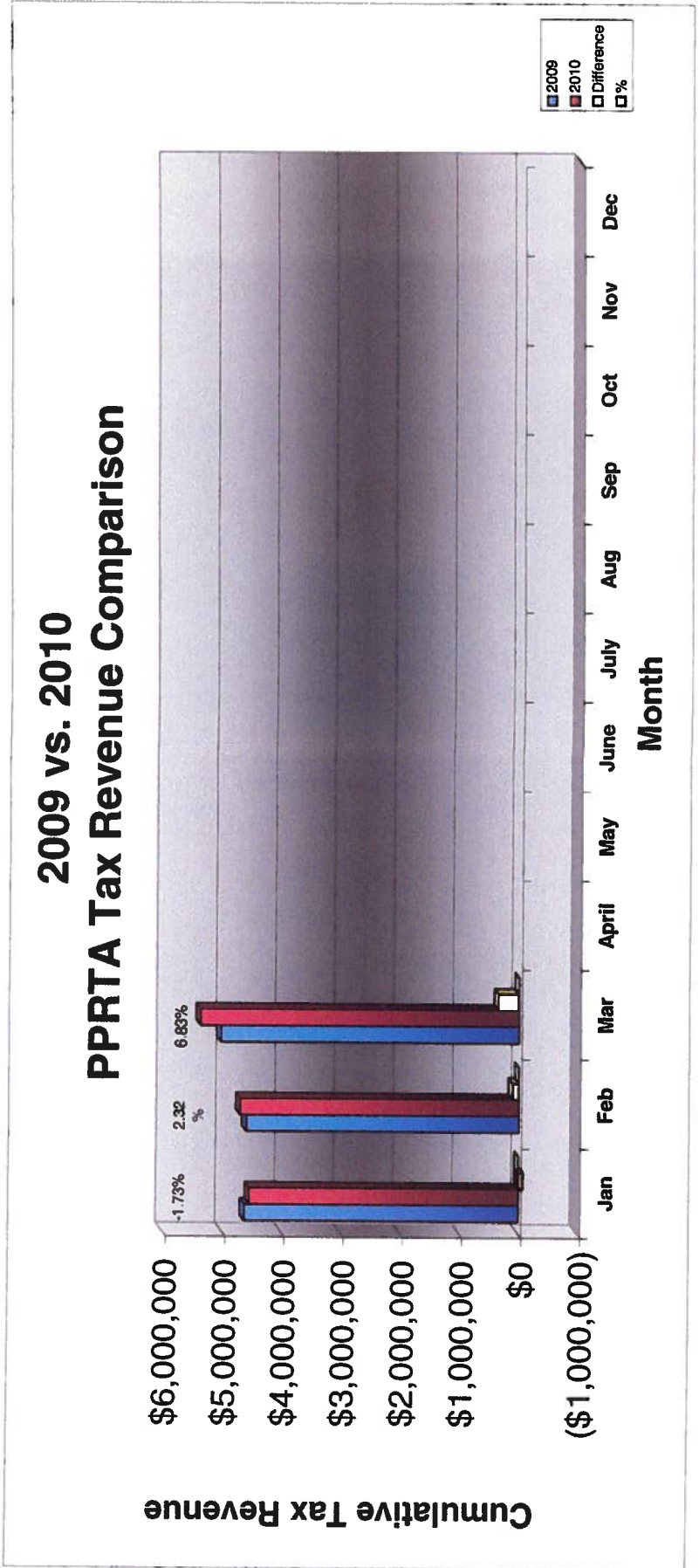
	Monthly			Cumulative Year-To-Date			2009 Actual
	Actual	Budget	Difference	Actual	Budget	Difference	
January	\$4,549,506	\$4,433,743	\$115,763	\$4,549,506	\$4,433,743	\$115,763	\$4,629,770
February	4,708,591	4,407,458	301,133	9,258,097	8,841,201	416,896	4,602,039
March	5,381,426	4,820,054	561,372	14,639,523	13,661,255	978,268	5,037,336
April		4,623,404					4,829,866
May		5,197,699					5,435,758
June		5,239,497					5,479,856
July		5,222,174					5,461,580
August		5,199,924					5,438,106
September		5,247,936					5,488,759
October		4,996,553					5,223,545
November		4,607,783					4,813,386
December		6,003,775					6,286,186
Year Total	\$14,639,523	\$60,000,000	\$978,268	\$14,639,523	\$13,661,255	\$978,268	\$62,726,186



**Pikes Peak RTA
Sales and Use Tax Comparison for 2009 and 2010**

	Jan	Feb	Mar	April	May	June	July	Aug	Sep	Oct	Nov	Dec	Total
2009 Sales & Use Tax receipts	4,629,770	4,602,039	5,037,336	4,829,866	5,435,758	5,479,856	5,472,719	5,426,967	5,488,759	5,223,545	4,813,386	6,286,186	62,726,187
Use tax	372,298	365,267	395,671										1,133,236
Sales tax	4,177,208	4,343,324	4,985,755										13,506,287
2010 Sales & Use Tax receipts	4,549,506	4,708,591	5,981,426	0	0	0	0	0	0	0	0	0	14,639,523

\$ change 2009 to 2010 (80,264)
 % monthly change -1.73%
 Cumulative % change 2.60%





**Pikes Peak Rural Transportation Authority
Revenue and Expense Summary
For Year End December 31, 2010
As of May 12, 2010
Modified Cash Basis¹
(in dollars)**

	Year-to-date Actual	Year-to-date Budget	Percent of YTD Budget Complete	Annual Budget Including Carryover	Actual Difference from Budget	Percent of Budget Complete
Revenue						
Tax Collections:						
Capital:						
Town of Green Mountain Falls	\$1,576	\$1,469	107%	\$6,457	(\$4,881)	24%
City of Colorado Springs	4,162,680	3,879,310	107%	17,053,180	(12,890,500)	24%
El Paso County	3,817,872	3,557,975	107%	15,640,613	(11,822,741)	24%
	7,982,128	7,438,753	107%	32,700,250	(24,718,122)	24%
Maintenance:						
Town of Green Mountain Falls	8,203	7,645	107%	33,607	(25,404)	24%
City of Manitou Springs	52,853	49,255	107%	216,520	(163,667)	24%
City of Colorado Springs	3,829,919	3,569,202	107%	15,689,966	(11,860,047)	24%
El Paso County	1,187,321	1,106,496	107%	4,864,079	(3,676,758)	24%
Town of Ramah	1,239	1,155	107%	5,078	(3,839)	24%
	5,079,535	4,733,752	107%	20,809,250	(15,729,715)	24%
Public Transportation	1,451,296	1,352,500	107%	5,945,500	(4,494,204)	24%
Administration allocation of Tax Revenue	136,250	136,250	100%	545,000	(408,750)	25%
Baptist Road RTA allocation of Tax Revenue	(9,686)	0	N/A	0	(9,686)	N/A
Total Tax Revenue	14,639,523	13,661,255	107%	60,000,000	(45,360,477)	24%
Other Revenue Sources:						
Public Transportation fare revenue	721,284	778,040	93%	2,334,121	(1,612,837)	31%
Interest Earnings	80,934	104,167	78%	250,000	(169,066)	32%
Gross Revenue	15,441,741	14,543,462	106%	62,584,121	(47,142,380)	25%
State Tax Collection Fees	(32,349)	(65,000)	50%	(260,000)	(227,651)	12%
Net Revenue	15,409,392	14,478,462	106%	62,324,121	(46,914,729)	25%
Expenditures						
Administrative	131,870	181,667	73%	545,000	413,130	24%
Public Transportation	1,129,379	3,834,304	29%	9,202,330	8,072,951	12%
Maintenance						
Town of Green Mountain Falls	12,622	13,149	96%	33,617	20,995	38%
City of Manitou Springs	0	164,341	0%	420,159	420,159	0%
City of Colorado Springs	3,053,079	7,049,118	43%	18,021,945	14,968,866	17%
El Paso County	40,393	2,032,160	2%	5,195,470	5,155,077	1%
Town of Ramah	0	1,987	0%	5,079	5,079	0%
	3,106,094	9,260,755	34%	23,676,270	20,570,176	13%

	Year-to-date Actual	Year-to-date Budget	Percent of YTD Budget Complete	Annual Budget Including Carryover	Actual Difference from Budget	Percent of Budget Complete
Capital						
<i>Town of Green Mountain Falls</i>						
Ute Pass Widening	0	2,526	0%	6,459	6,459	0%
<i>City of Manitou Springs</i>						
Manitou Ave Improvements	0	164,152	0%	419,675	419,675	0%
<i>City of Colorado Springs</i>						
Austin Bluffs Interchange	1,400	0	#DIV/0!	0	(1,400)	#DIV/0!
S. Metro Accessibility, Phase I	280,470	5,798,610	5%	14,824,867	14,544,397	2%
Congestion/Incident Mgmt Signal Improvement	18,956	159,910	12%	408,831	389,875	5%
Powers Blvd Right of Way Protection	0	89,197	0%	228,043	228,043	0%
Roadway Safety and Traffic Operations	17,522	809,785	2%	2,070,317	2,052,795	1%
Vincent Drive Bridge	24,933	834,946	3%	2,134,642	2,109,709	1%
Pikes Peak Greenway Improvements	0	77,014	0%	196,895	196,895	0%
Woodmen Rd Widening & Interchange	521,275	6,496,956	8%	16,610,275	16,089,000	3%
On-Street Bikeway Improvements	7,802	64,636	12%	165,250	157,448	5%
Fillmore/El Paso Street Improvements	2,387	134,778	2%	344,577	342,190	1%
Vincent Drive Extension	64,010	2,442,518	3%	6,244,602	6,180,592	1%
Austin Bluffs (Nevada to Academy)	6,461	190,369	3%	486,703	480,242	1%
Austin Bluffs (Barnes to Old Farm)	6,380	190,369	3%	486,701	480,321	1%
Hancock Avenue Bridge	2,023	456,413	0%	1,166,876	1,164,853	0%
	953,619	17,745,501	5%	45,368,579	44,414,960	2%
<i>El Paso County</i>						
County Line Road Upgrade	1,456	518,474	0%	1,325,543	1,324,087	0%
Hodgen Rd upgrade to Arterial	399,674	2,997,464	13%	7,663,389	7,263,715	5%
Marksheffel Road Widening & Extension	373,766	2,884,800	13%	7,375,350	7,001,584	5%
S. Metro Accessibility	1,782,601	1,721,333	104%	4,400,803	2,618,202	41%
Meridian Rd Ext. (Falcon to US 24)	0	134,221	0%	343,153	343,153	0%
Meridian Rd Ext. (Woodmen to Rex Drive)	118,313	1,821,543	6%	4,657,000	4,538,687	3%
Stapleton/Judge Orr Extension	0	681,060	0%	1,741,215	1,741,215	0%
	2,675,810	10,758,895	25%	27,506,453	24,830,643	10%
Total Capital Expenditures	3,629,429	28,671,075	13%	73,301,166	69,671,737	5%
Total Projects and Transportation expenses	7,864,902	41,766,134	19%	106,179,766	98,314,864	7%
Total Expenditures	7,996,772	41,947,800	19%	106,724,766	98,727,994	7%
Revenue Over/(Under) Expenditures	7,412,620	(27,469,339)	-27%	(44,400,645)	(145,642,723)	-17%
Carryover		44,683,645		44,683,645	44,683,645	
Net Activity including prior year carryover	7,412,620	17,214,306	43%	283,000	(100,959,078)	16%
Reserves:						
Board Appropriation of reserves		0	N/A		0	N/A
Reserve balance adjustment to 10% of budget		27,000	0%	27,000	27,000	0%
Replenish Reserve for prior year appropriation		(310,000)	0%	(310,000)	(310,000)	0%
Net Reserve balance adjustment	0	(283,000)	0%	(283,000)	(283,000)	0%
Net Activity Less Reserve adjustment	\$7,412,620	\$16,931,306	44%	\$0	\$7,412,620	N/A

¹ Tax revenues from the State are received two months after the reported month. This statement includes March sales and use tax received in May.