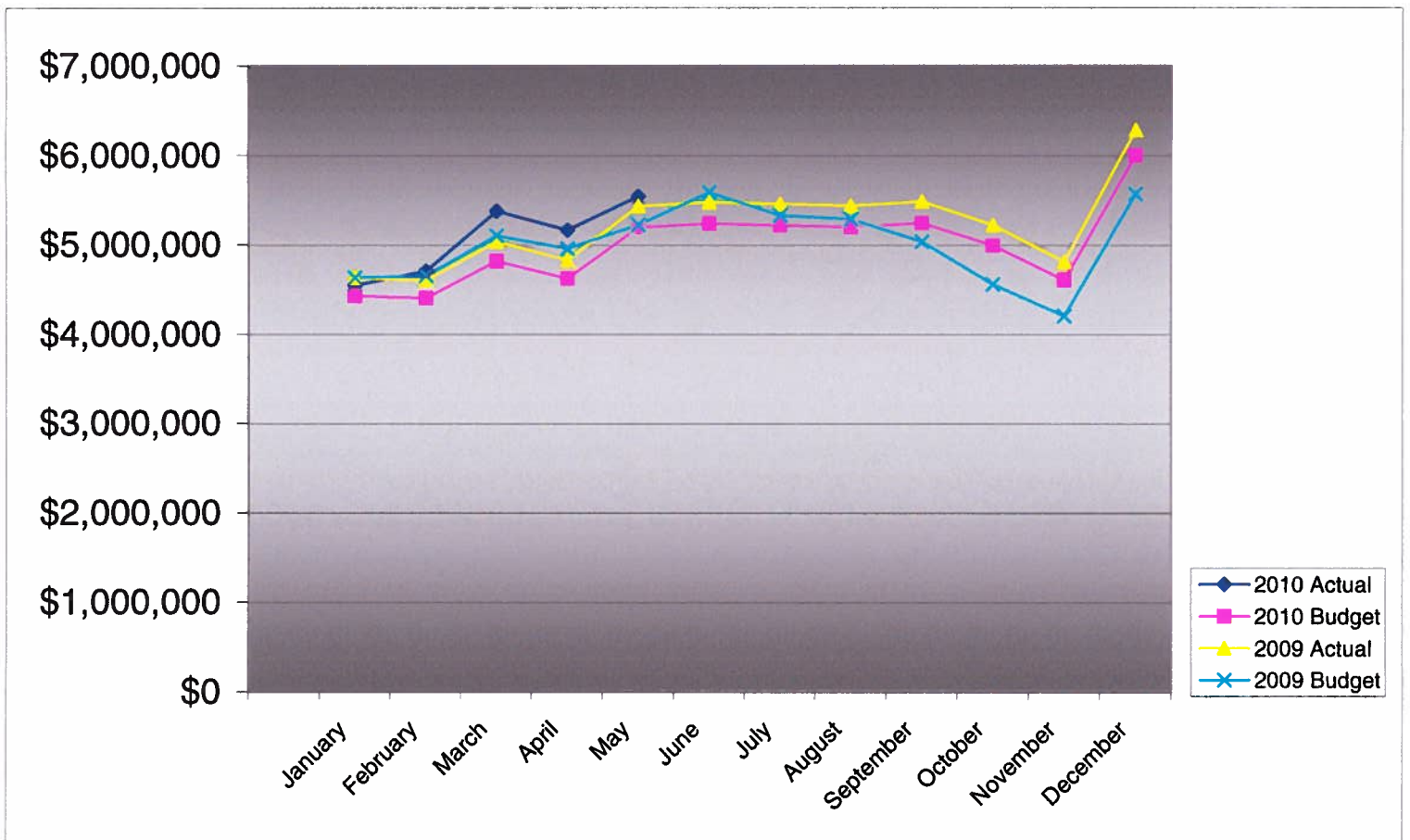


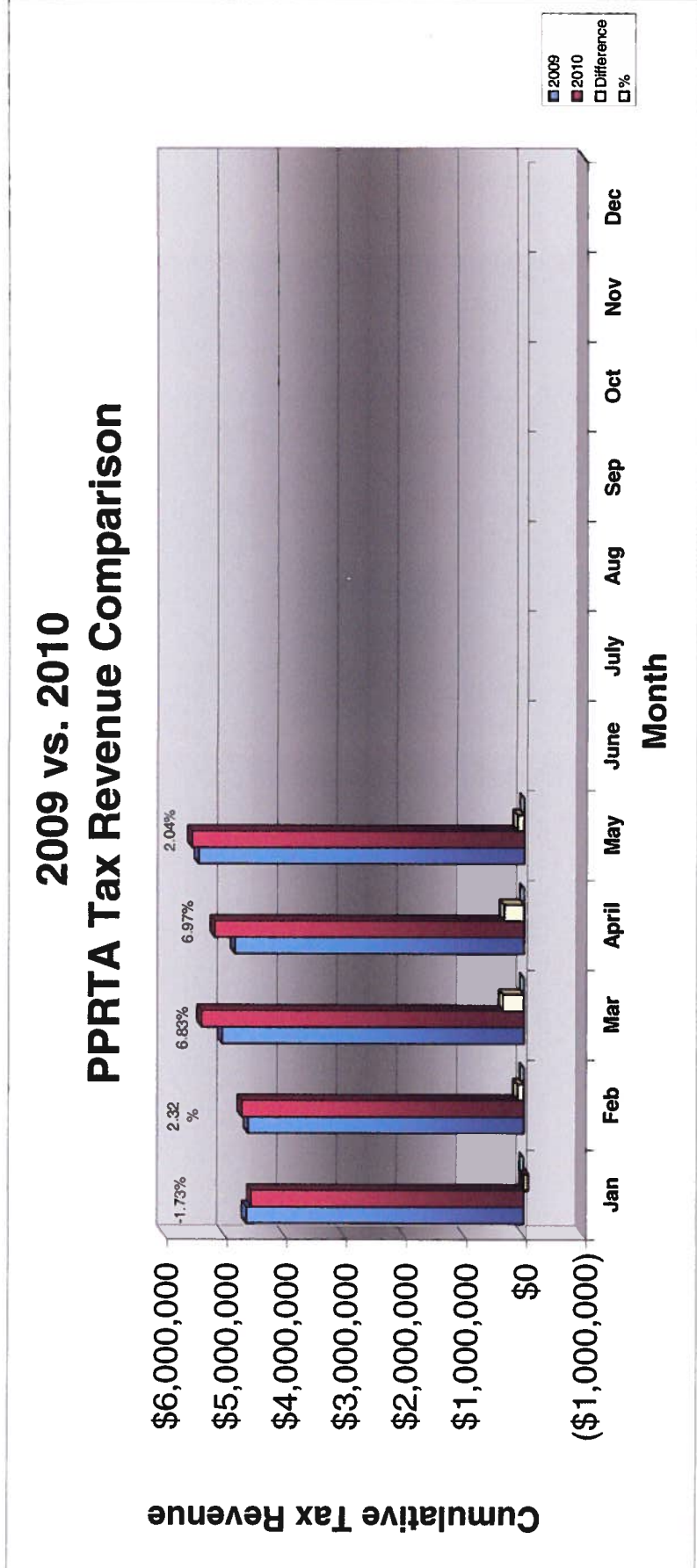
**PIKES PEAK RURAL TRANSPORTATION AUTHORITY
2010 SALES TAX COMPARISON TO AMENDED BUDGET**

	Monthly			Cumulative Year-To-Date			2009 Actual
	Actual	Budget	Difference	Actual	Budget	Difference	
January	\$4,549,506	\$4,433,743	\$115,763	\$4,549,506	\$4,433,743	\$115,763	\$4,629,770
February	4,708,591	4,407,458	301,133	9,258,097	8,841,201	416,896	4,602,039
March	5,381,426	4,820,054	561,372	14,639,523	13,661,255	978,268	5,037,336
April	5,166,430	4,623,404	543,026	19,805,953	18,284,659	1,521,294	4,829,866
May	5,546,435	5,197,699	348,736	25,352,388	23,482,358	1,870,030	5,435,758
June		5,239,497					5,479,856
July		5,222,174					5,461,580
August		5,199,924					5,438,106
September		5,247,936					5,488,759
October		4,996,553					5,223,545
November		4,607,783					4,813,386
December		6,003,775					6,286,186
Year Total	\$25,352,388	\$60,000,000	\$1,870,030	\$25,352,388	\$23,482,358	\$1,870,030	\$62,726,186



**Pikes Peak RTA
Sales and Use Tax Comparison for 2009 and 2010**

	Jan	Feb	Mar	April	May	June	July	Aug	Sep	Oct	Nov	Dec	Total
2009 Sales & Use Tax receipts	4,629,770	4,602,039	5,037,336	4,829,866	5,435,758	5,479,856	5,472,719	5,426,967	5,488,759	5,223,545	4,813,386	6,286,186	62,726,187
Use tax	372,298	365,267	395,671	410,409	301,921								1,845,566
Sales tax	4,177,208	4,343,324	4,985,755	4,756,021	5,244,514								23,506,822
2010 Sales & Use Tax receipts	4,549,506	4,708,591	5,381,426	5,166,430	5,546,435	0	0	0	0	0	0	0	25,352,388
\$ change 2009 to 2010	(80,264)	106,552	344,090	336,564	110,677								817,619
% monthly change	-1.73%	0.28%	2.60%	3.70%	3.33%								3.33%
Cumulative % change													





Pikes Peak Rural Transportation Authority
Revenue and Expense Summary
For Year End December 31, 2010
As of July 9, 2010
Modified Cash Basis¹
(in dollars)

	Year-to-date Actual	Year-to-date Budget	Percent of YTD Budget Complete	Annual Budget Including Carryover	Actual Difference from Budget	Percent of Budget Complete
Revenue						
Tax Collections:						
Capital:						
Town of Green Mountain Falls	\$2,730	\$2,526	108%	\$6,457	(\$3,727)	42%
City of Colorado Springs	7,209,344	6,670,194	108%	17,053,180	(9,843,836)	42%
El Paso County	6,612,172	6,117,681	108%	15,640,613	(9,028,441)	42%
	<u>13,824,246</u>	<u>12,790,401</u>	108%	<u>32,700,250</u>	<u>(18,876,004)</u>	42%
Maintenance:						
Town of Green Mountain Falls	14,208	13,145	108%	33,607	(19,399)	42%
City of Manitou Springs	91,535	84,690	108%	216,520	(124,985)	42%
City of Colorado Springs	6,633,035	6,136,985	108%	15,689,966	(9,056,931)	42%
El Paso County	2,056,321	1,902,540	108%	4,864,079	(2,807,758)	42%
Town of Ramah	2,147	1,986	108%	5,078	(2,931)	42%
	<u>8,797,246</u>	<u>8,139,346</u>	108%	<u>20,809,250</u>	<u>(12,012,004)</u>	42%
Public Transportation	<u>2,513,499</u>	<u>2,325,527</u>	108%	<u>5,945,500</u>	<u>(3,432,001)</u>	42%
Administration allocation of Tax Revenue	227,083	227,083	100%	545,000	(317,917)	42%
Baptist Road RTA allocation of Tax Revenue	(9,686)	0	N/A	0	(9,686)	N/A
Total Tax Revenue	<u>25,352,388</u>	<u>23,482,358</u>	108%	<u>60,000,000</u>	<u>(34,647,612)</u>	42%
Other Revenue Sources:						
Public Transportation fare revenue	1,211,639	1,167,061	104%	2,334,121	(1,122,482)	52%
Interest Earnings	130,184	125,000	104%	250,000	(119,816)	52%
Gross Revenue	<u>26,694,211</u>	<u>24,774,419</u>	108%	<u>62,584,121</u>	<u>(35,889,910)</u>	43%
State Tax Collection Fees	<u>(68,408)</u>	<u>(108,333)</u>	63%	<u>(260,000)</u>	<u>(191,592)</u>	26%
Net Revenue	<u>26,625,803</u>	<u>24,666,085</u>	108%	<u>62,324,121</u>	<u>(35,698,318)</u>	43%
Expenditures						
Administrative	163,226	227,083	72%	545,000	381,774	30%
Public Transportation	2,770,359	4,601,165	60%	9,202,330	6,431,971	30%
Maintenance						
Town of Green Mountain Falls	17,706	16,086	110%	33,617	15,911	53%
City of Manitou Springs	0	201,047	0%	420,159	420,159	0%
City of Colorado Springs	6,435,360	8,623,542	75%	18,021,945	11,586,585	36%
El Paso County	146,814	2,486,044	6%	5,195,470	5,048,656	3%
Town of Ramah	0	2,430	0%	5,079	5,079	0%
	<u>6,599,880</u>	<u>11,329,150</u>	58%	<u>23,676,270</u>	<u>17,076,390</u>	28%

	Year-to-date Actual	Year-to-date Budget	Percent of YTD Budget Complete	Annual Budget Including Carryover	Actual Difference from Budget	Percent of Budget Complete
Capital						
<i>Town of Green Mountain Falls</i>						
Ute Pass Widening	5,538	3,091	179%	6,459	921	86%
<i>City of Manitou Springs</i>						
Manitou Ave Improvements	37,053	200,815	18%	419,675	382,622	9%
<i>City of Colorado Springs</i>						
Austin Bluffs Interchange	9,575	0	#DIV/0!	0	(9,575)	#DIV/0!
S. Metro Accessibility, Phase I	805,112	7,093,733	11%	14,824,867	14,019,755	5%
Congestion/Incident Mgmt Signal Improvement	38,104	195,627	19%	408,831	370,727	9%
Powers Blvd Right of Way Protection	0	109,119	0%	228,043	228,043	0%
Roadway Safety and Traffic Operations	48,049	990,651	5%	2,070,317	2,022,268	2%
Vincent Drive Bridge	43,919	1,021,431	4%	2,134,642	2,090,723	2%
Pikes Peak Greenway Improvements	0	94,215	0%	196,895	196,895	0%
Woodmen Rd Widening & Interchange	2,451,587	7,948,055	31%	16,610,275	14,158,688	15%
On-Street Bikeway Improvements	8,066	79,073	10%	165,250	157,184	5%
Fillmore/El Paso Street Improvements	10,456	164,881	6%	344,577	334,121	3%
Vincent Drive Extension	92,583	2,988,056	3%	6,244,602	6,152,019	1%
Austin Bluffs (Nevada to Academy)	8,565	232,889	4%	486,703	478,138	2%
Austin Bluffs (Barnes to Old Farm)	8,483	232,888	4%	486,701	478,218	2%
Hancock Avenue Bridge	7,439	558,353	1%	1,166,876	1,159,437	1%
	3,531,938	21,708,970	16%	45,368,579	41,836,641	8%
<i>El Paso County</i>						
County Line Road Upgrade	1,456	634,275	0%	1,325,543	1,324,087	0%
Hodgen Rd upgrade to Arterial	475,767	3,666,949	13%	7,663,389	7,187,622	6%
Marksheffel Road Widening & Extension	627,613	3,529,122	18%	7,375,350	6,747,737	9%
S. Metro Accessibility	2,064,083	2,105,794	98%	4,400,803	2,336,720	47%
Meridian Rd Ext. (Falcon to US 24)	0	164,200	0%	343,153	343,153	0%
Meridian Rd Ext. (Woodmen to Rex Drive)	164,368	2,228,385	7%	4,657,000	4,492,632	4%
Stapleton/Judge Orr Extension	0	833,175	0%	1,741,215	1,741,215	0%
	3,333,287	13,161,901	25%	27,506,453	24,173,166	12%
Total Capital Expenditures	6,907,816	35,074,777	20%	73,301,166	66,393,350	9%
Total Projects and Transportation expenses	16,278,055	51,005,092	32%	106,179,766	89,901,711	15%
Total Expenditures	16,441,281	51,232,176	32%	106,724,766	90,283,485	15%
Revenue Over/(Under) Expenditures	10,184,522	(26,566,090)	-38%	(44,400,645)	(125,981,803)	-23%
Carryover		44,683,645		44,683,645	44,683,645	
Net Activity including prior year carryover	10,184,522	18,117,555	56%	283,000	(81,298,158)	23%
Reserves:						
Board Appropriation of reserves		0	N/A		0	N/A
Reserve balance adjustment to 10% of budget		27,000	0%	27,000	27,000	0%
Replenish Reserve for prior year appropriation		(310,000)	0%	(310,000)	(310,000)	0%
Net Reserve balance adjustment	0	(283,000)	0%	(283,000)	(283,000)	0%
Net Activity Less Reserve adjustment	\$10,184,522	\$17,834,555	57%	\$0	\$10,184,522	N/A

¹ Tax revenues from the State are received two months after the reported month. This statement includes May sales and use tax received in July.