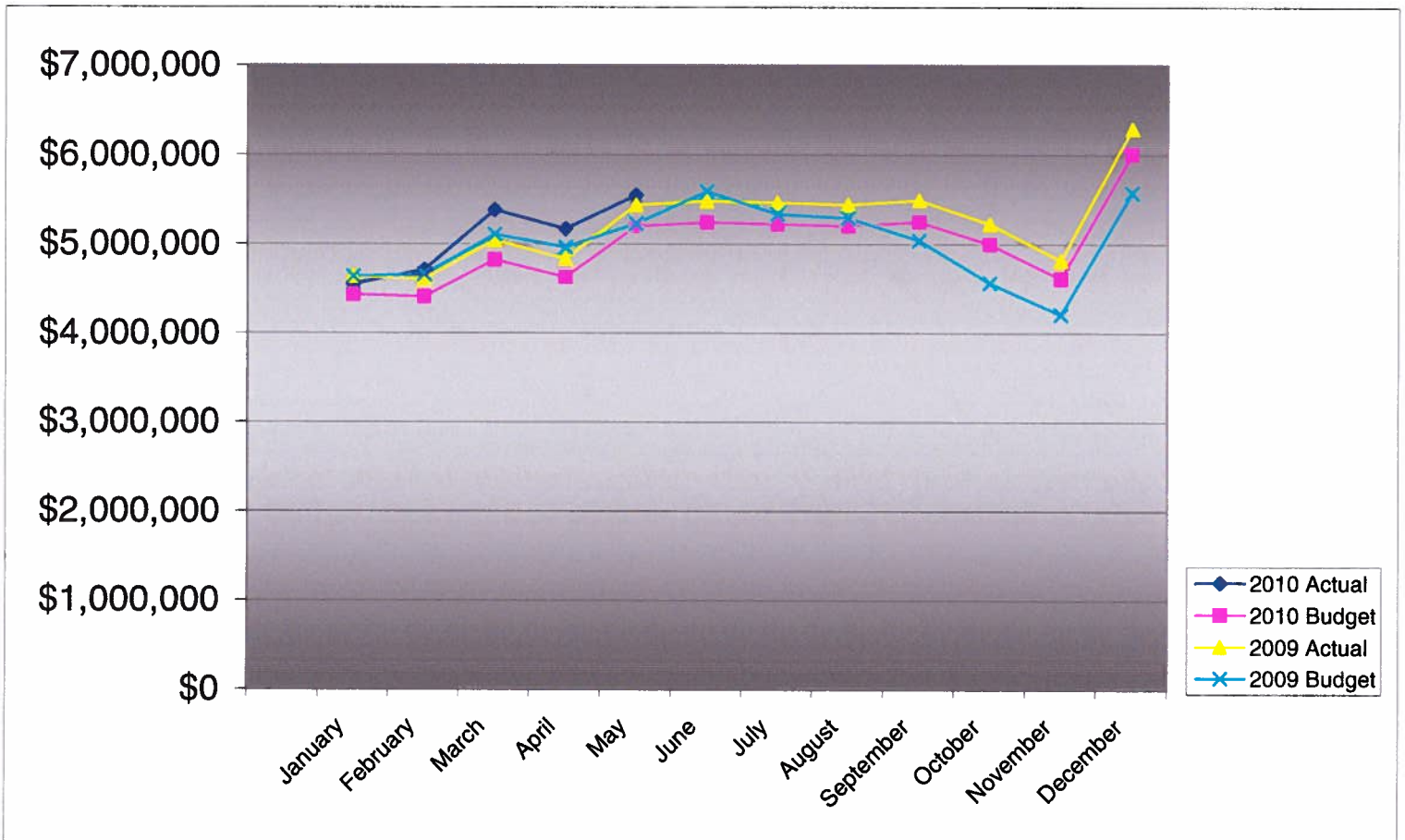


**PIKES PEAK RURAL TRANSPORTATION AUTHORITY
2010 SALES TAX COMPARISON TO AMENDED BUDGET**

	Monthly			Cumulative Year-To-Date			2009 Actual
	Actual	Budget	Difference	Actual	Budget	Difference	
January	\$4,549,506	\$4,581,361	(\$31,855)	\$4,549,506	\$4,581,361	(\$31,855)	\$4,629,770
February	4,708,591	4,554,192	154,399	9,258,097	9,135,554	122,543	4,602,039
March	5,381,426	4,980,668	400,758	14,639,523	14,116,222	523,301	5,037,336
April	5,166,430	4,777,402	389,028	19,805,953	18,893,624	912,329	4,829,866
May	5,546,435	5,371,016	175,419	25,352,388	24,264,640	1,087,748	5,435,758
June	5,953,790	5,414,220	539,570	31,306,178	29,678,860	\$1,627,318	5,479,856
July		5,396,314					5,461,580
August		5,373,316					5,438,106
September		5,422,942					5,488,759
October		5,163,103					5,223,545
November		4,761,256					4,813,386
December		6,204,208					6,286,186
Year Total	\$31,306,178	\$62,000,000	\$1,627,318	\$31,306,178	\$29,678,860	\$1,627,318	\$62,726,186

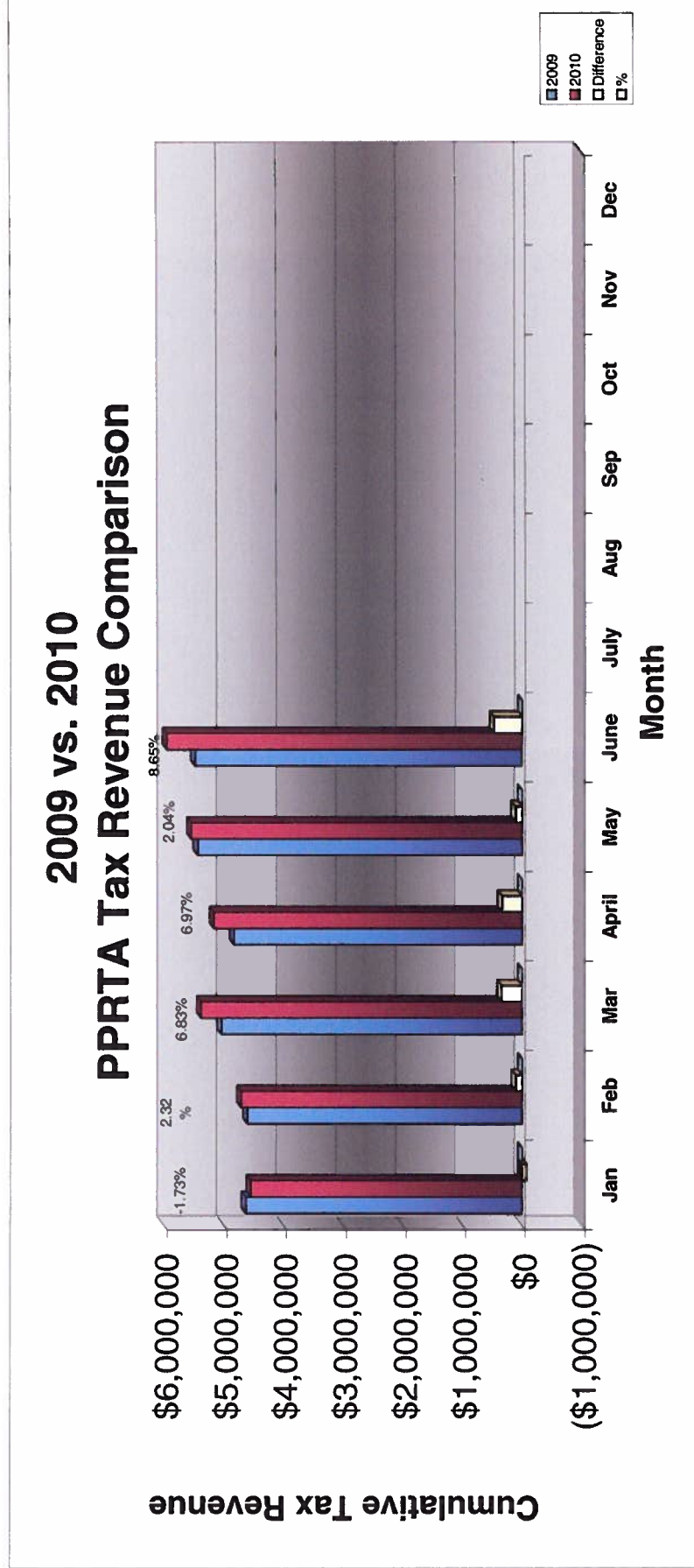


**Pikes Peak RTA
Sales and Use Tax Comparison for 2009 and 2010**

	Jan	Feb	Mar	April	May	June	July	Aug	Sep	Oct	Nov	Dec	Total
2009 Sales & Use Tax receipts	4,629,770	4,602,039	5,037,336	4,829,866	5,435,758	5,479,856	5,472,719	5,426,967	5,488,759	5,223,545	4,813,386	6,286,186	62,726,187

Use tax	372,298	365,267	395,671	410,409	301,921	385,900							2,231,466
Sales tax	4,177,208	4,343,324	4,985,755	4,756,021	5,244,514	5,567,890							29,074,712

2010 Sales & Use Tax receipts	4,549,506	4,708,591	5,381,426	5,166,430	5,546,435	5,953,790	0	0	0	0	0	0	31,306,178
\$ change 2009 to 2010	(80,264)	106,552	344,090	336,564	110,677	473,934							1,291,553
% monthly change	-1.73%	0.28%	2.60%	3.70%	3.33%	4.30%							5.26%
Cumulative % change													





Pikes Peak Rural Transportation Authority
Revenue and Expense Summary
For Year End December 31, 2010
As of August 9, 2010
Modified Cash Basis¹
(in dollars)

	Year-to-date Actual	Year-to-date Budget	Percent of YTD Budget Complete	Annual Budget Including Carryover	Actual Difference from Budget	Percent of Budget Complete
Revenue						
Tax Collections:						
Capital:						
Town of Green Mountain Falls	\$3,271	\$3,090	106%	\$6,457	(\$3,186)	51%
City of Colorado Springs	8,974,513	8,477,329	106%	17,716,381	(8,741,868)	51%
El Paso County	8,096,067	7,647,549	106%	15,982,262	(7,886,195)	51%
	17,073,851	16,127,968	106%	33,705,100	(16,631,249)	51%
Maintenance:						
Town of Green Mountain Falls	17,547	16,575	106%	34,640	(17,093)	51%
City of Manitou Springs	113,052	106,789	106%	223,173	(110,121)	51%
City of Colorado Springs	8,192,235	7,738,390	106%	16,172,105	(7,979,870)	51%
El Paso County	2,539,692	2,398,994	106%	5,013,548	(2,473,856)	51%
Town of Ramah	2,652	2,504	106%	5,234	(2,582)	51%
	10,865,178	10,263,253	106%	21,448,700	(10,583,522)	51%
Public Transportation	3,104,335	2,932,358	106%	6,128,200	(3,023,865)	51%
Administration allocation of Tax Revenue	272,500	272,500	100%	545,000	(272,500)	50%
Reserve portion of Revenue		82,781		173,000	(173,000)	0%
Baptist Road RTA allocation of Tax Revenue	(9,686)	0	N/A	0	(9,686)	N/A
Total Tax Revenue	31,306,178	29,678,860	105%	62,000,000	(30,693,822)	50%
Other Revenue Sources:						
Public Transportation fare revenue	1,516,829	1,300,000	117%	2,600,000	(1,083,171)	58%
Interest Earnings	156,041	125,000	125%	250,000	(93,959)	62%
Gross Revenue	32,979,048	31,103,860	106%	64,850,000	(31,870,952)	51%
State Tax Collection Fees	(83,400)	(108,333)	77%	(260,000)	(176,600)	32%
Net Revenue	32,895,648	30,995,526	106%	64,590,000	(31,694,352)	51%
Expenditures						
Administrative	238,255	272,500	87%	545,000	306,745	44%
Public Transportation	3,203,363	6,622,033	48%	11,352,056	8,148,693	28%
Maintenance						
Town of Green Mountain Falls	17,706	20,451	87%	36,160	18,454	49%
City of Manitou Springs	0	246,899	0%	436,547	436,547	0%
City of Colorado Springs	9,255,917	11,252,885	82%	19,896,450	10,640,533	47%
El Paso County	2,201,746	3,182,982	69%	5,627,894	3,426,148	39%
Town of Ramah	0	3,090	0%	5,464	5,464	0%
	11,475,369	14,706,307	78%	26,002,515	14,527,146	44%

	Year-to-date Actual	Year-to-date Budget	Percent of YTD Budget Complete	Annual Budget Including Carryover	Actual Difference from Budget	Percent of Budget Complete
Capital						
<i>Town of Green Mountain Falls</i>						
Ute Pass Widening	6,459	3,653	177%	6,459	0	100%
<i>City of Manitou Springs</i>						
Manitou Ave Improvements	37,053	366,731	10%	648,425	611,372	6%
<i>City of Colorado Springs</i>						
Austin Bluffs Interchange	17,429	127,440	14%	225,330	207,901	8%
S. Metro Accessibility, Phase I	3,857,268	9,306,712	41%	16,455,384	12,598,116	23%
Constitution/Circle Drive Improvements	0	2,519	0%	4,454	4,454	0%
Congestion/Incident Mgmt Signal Improvement	40,742	249,979	16%	441,993	401,251	9%
Powers Blvd Right of Way Protection	0	129,572	0%	229,098	229,098	0%
Roadway Safety and Traffic Operations	109,634	969,096	11%	1,713,478	1,603,844	6%
Vincent Drive Bridge	104,815	1,258,699	8%	2,225,531	2,120,716	5%
Pikes Peak Greenway Improvements	0	455,302	0%	805,028	805,028	0%
Woodmen Rd Widening & Interchange	3,515,053	8,215,953	43%	14,526,791	11,011,738	24%
On-Street Bikeway Improvements	23,634	158,225	15%	279,760	256,126	8%
Fillmore/El Paso Street Improvements	178,420	193,486	92%	342,107	163,687	52%
Vincent Drive Extension	179,470	4,096,634	4%	7,243,341	7,063,871	2%
30th Street Corridor Safety Improvements	0	23,046	0%	40,748	40,748	0%
Austin Bluffs (Nevada to Academy)	8,565	312,306	3%	552,195	543,630	2%
Austin Bluffs (Barnes to Old Farm)	8,509	312,312	3%	552,205	543,696	2%
Hancock Avenue Bridge	39,513	654,450	6%	1,157,146	1,117,633	3%
	8,083,052	26,465,732	31%	46,794,589	38,711,537	17%
<i>El Paso County</i>						
County Line Road Upgrade	1,456	523,256	0%	925,179	923,723	0%
Hodgen Rd upgrade to Arterial	768,840	3,498,842	22%	6,186,372	5,417,532	12%
Baptist Rd Widening (I-25 to Tari Dr.)	0	115,902	0%	204,928	204,928	0%
Marksheffel Road Widening & Extension	1,193,229	7,138,175	17%	12,621,150	11,427,921	9%
S. Metro Accessibility	2,574,465	3,155,865	82%	5,579,948	3,005,483	46%
Meridian Rd Ext. (Woodmen to Rex Drive)	164,369	1,964,045	8%	3,472,668	3,308,299	5%
Stapleton Rd (Eastonville to US 24)	136,000	984,783	14%	1,741,215	1,605,215	8%
	4,838,359	17,380,868	28%	30,731,460	25,893,101	16%
Total Capital Expenditures	12,964,923	44,216,985	29%	78,180,933	65,216,010	17%
Total Projects and Transportation expenses	27,643,655	65,545,324	42%	115,535,504	87,891,849	24%
Total Expenditures	27,881,910	65,817,824	42%	116,080,504	88,198,594	24%
Revenue Over/(Under) Expenditures	5,013,738	(34,822,298)	-14%	(51,490,504)	(119,892,946)	-10%
Carryover		51,973,504		51,973,504	51,973,504	
Net Activity including prior year carryover	5,013,738	17,151,206	29%	483,000	(67,919,442)	10%
Reserves:						
Board Appropriation of reserves		0	N/A		0	N/A
Reserve balance adjustment to 10% of budget		(173,000)	0%	(173,000)	(173,000)	0%
Replenish Reserve for prior year appropriation		(310,000)	0%	(310,000)	(310,000)	0%
Net Reserve balance adjustment	0	(483,000)	0%	(483,000)	(483,000)	0%
Net Activity Less Reserve adjustment	\$5,013,738	\$16,668,206	30%	\$0	\$5,013,738	N/A

¹ Tax revenues from the State are received two months after the reported month. This statement includes June sales and use tax received in August.