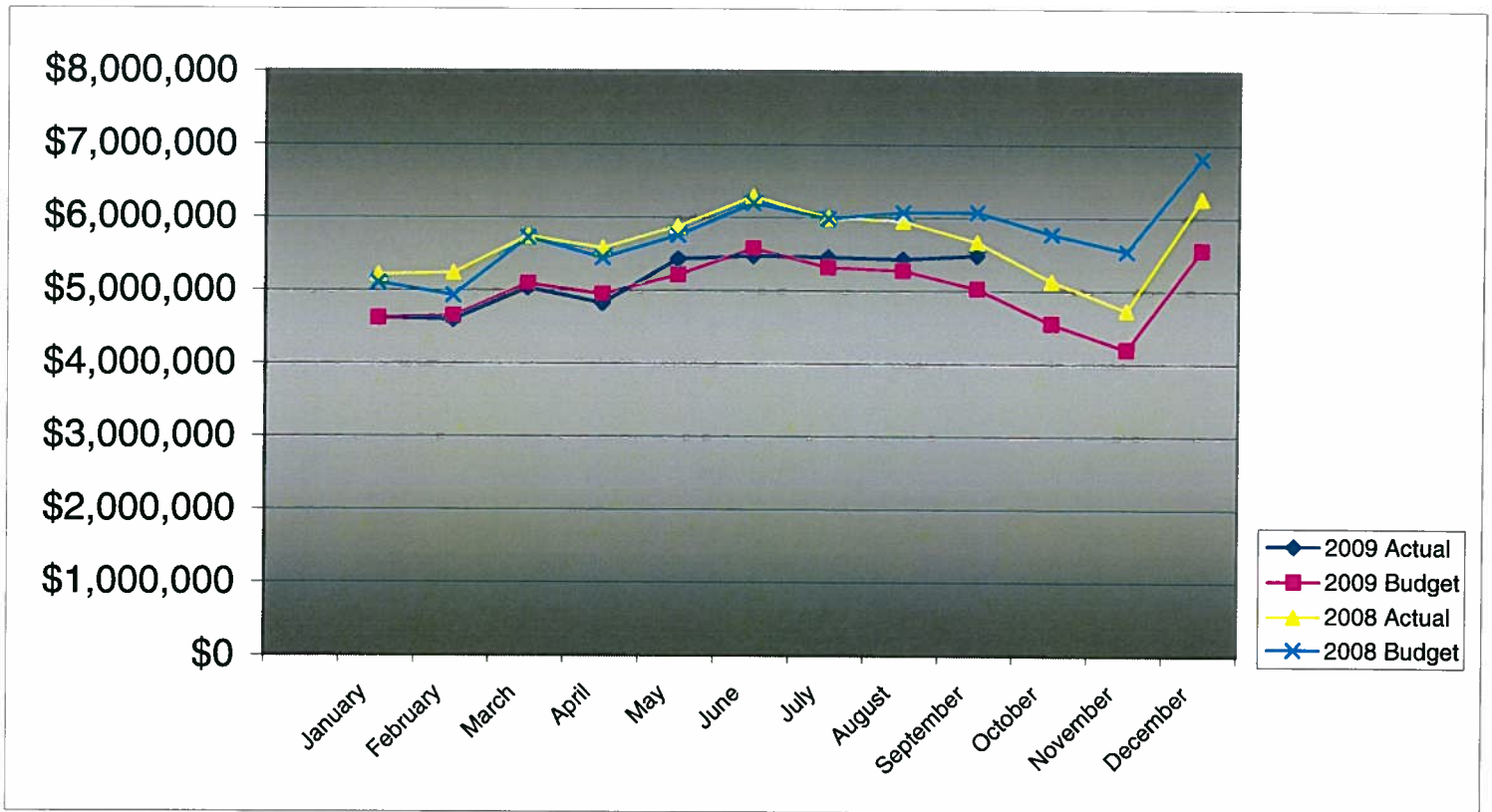


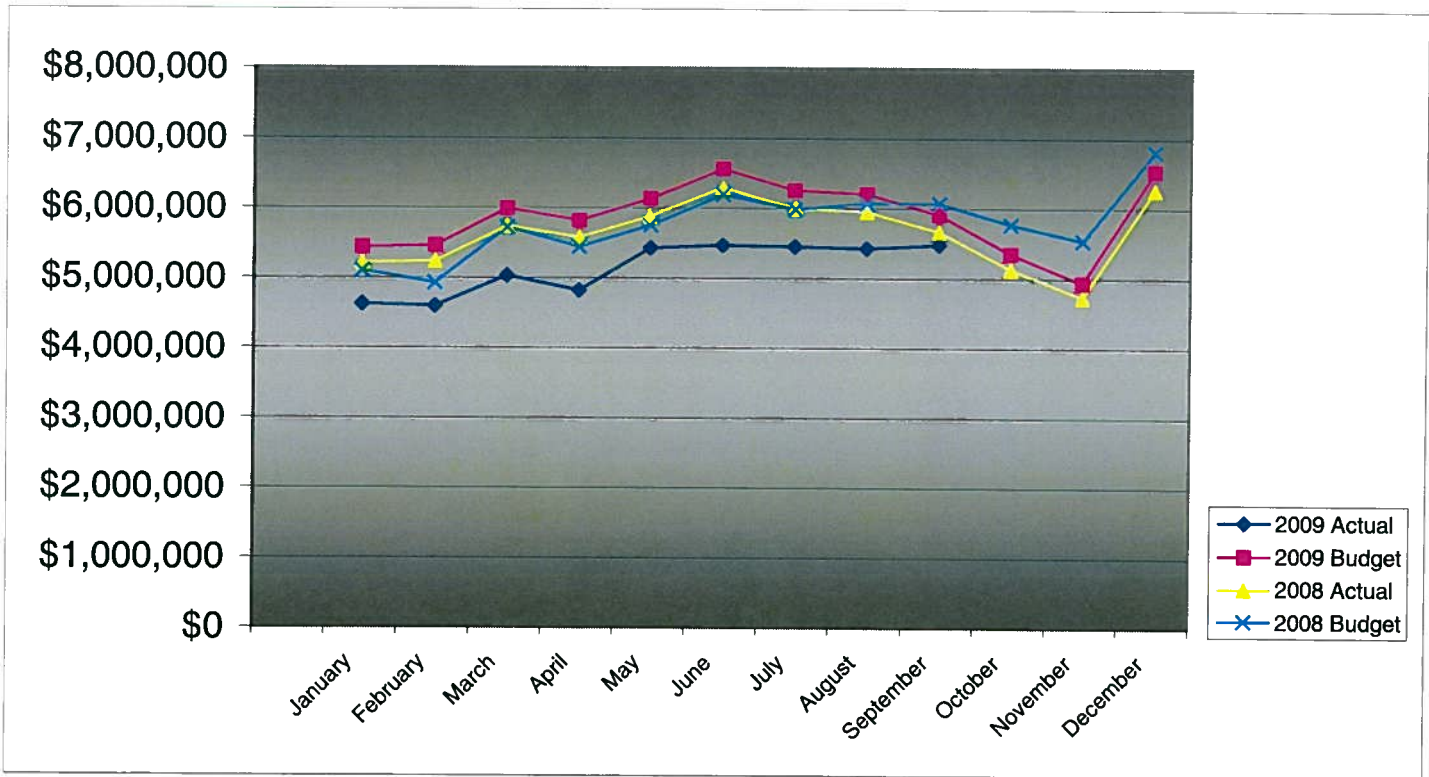
**PIKES PEAK RURAL TRANSPORTATION AUTHORITY  
2009 SALES TAX COMPARISON TO AMENDED BUDGET**

	-----Monthly-----			-----Cumulative Year-To-Date-----			2008 Actual
	Actual	Budget	Difference	Actual	Budget	Difference	
<b>January</b>	\$4,629,770	\$4,633,297	(\$3,527)	\$4,629,770	\$4,633,297	(\$3,527)	\$5,221,759
<b>February</b>	4,602,039	\$4,657,923	(\$55,884)	9,231,809	9,291,220	(59,411)	5,249,512
<b>March</b>	5,037,336	\$5,106,335	(\$68,999)	14,269,145	14,397,556	(128,411)	5,754,876
<b>April</b>	4,829,866	\$4,961,713	(\$131,847)	19,099,011	19,359,268	(260,257)	5,591,885
<b>May</b>	5,435,758	\$5,229,063	\$206,695	24,534,769	24,588,331	(53,562)	5,893,191
<b>June</b>	5,479,856	\$5,588,975	(\$109,119)	30,014,625	30,177,306	(162,681)	6,298,814
<b>July</b>	5,461,580	\$5,333,069	\$128,511	35,476,205	35,510,375	(34,170)	6,010,406
<b>August</b>	5,438,106	\$5,290,006	\$148,100	40,914,311	40,800,380	113,930	5,961,874
<b>September</b>	5,488,759	\$5,038,183	\$450,576	46,403,070	45,838,564	564,506	5,678,068
<b>October</b>		\$4,562,801					5,142,309
<b>November</b>		\$4,207,590					4,741,984
<b>December</b>		\$5,571,045					6,278,607
<b>Year Total</b>	<b>\$46,403,070</b>	<b>\$60,180,000</b>	<b>\$564,506</b>	<b>\$46,403,070</b>	<b>\$45,838,564</b>	<b>\$564,506</b>	<b>\$67,823,285</b>



**PIKES PEAK RURAL TRANSPORTATION AUTHORITY  
2009 SALES TAX BUDGET COMPARISON TO ACTUAL  
Original Budget Before Amendment**

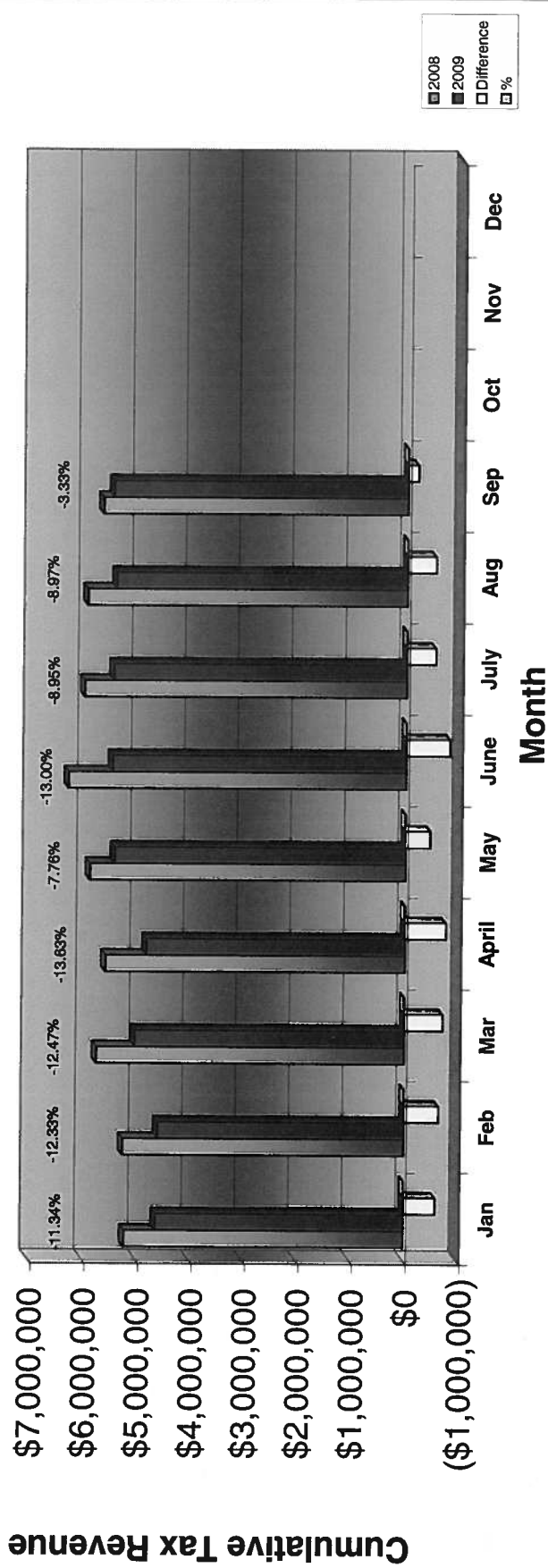
	Monthly			Cumulative Year-To-Date			2008 Actual
	Actual	Budget	Difference	Actual	Budget	Difference	
January	\$4,629,770	\$5,450,938	(\$821,168)	\$4,629,770	\$5,450,938	(\$821,168)	\$5,221,759
February	4,602,039	\$5,479,909	(\$877,870)	9,231,809	10,930,848	(1,699,039)	5,249,512
March	5,037,336	\$6,007,453	(\$970,117)	14,269,145	16,938,301	(2,669,156)	5,754,876
April	4,829,866	\$5,837,309	(\$1,007,443)	19,099,011	22,775,609	(3,676,598)	5,591,885
May	5,435,758	\$6,151,839	(\$716,081)	24,534,769	28,927,448	(4,392,680)	5,893,191
June	5,479,856	\$6,575,264	(\$1,095,408)	30,014,625	35,502,713	(5,488,088)	6,298,814
July	5,461,580	\$6,274,198	(\$812,618)	35,476,205	41,776,911	(6,300,706)	6,010,406
August	5,438,106	\$6,223,536	(\$785,430)	40,914,311	48,000,448	(7,086,137)	5,961,874
September	5,488,759	\$5,927,274	(\$438,515)	46,403,070	53,489,207	(7,086,137)	5,678,068
October		\$5,368,001					5,142,309
November		\$4,950,106					4,741,984
December		\$6,554,171					6,278,607
<b>Year Total</b>	<b>\$46,403,070</b>	<b>\$70,800,000</b>	<b>(\$7,524,652)</b>	<b>\$46,403,070</b>	<b>\$53,489,207</b>	<b>(7,086,137)</b>	<b>\$67,823,285</b>



**Pikes Peak RTA  
Sales and Use Tax Comparison for 2008 and 2009**

	Jan	Feb	Mar	April	May	June	July	Aug	Sep	Oct	Nov	Dec	Total
2008 Sales & Use Tax receipts	5,221,759	5,249,512	5,754,876	5,591,885	5,893,191	6,298,814	6,010,406	5,961,874	5,678,068	5,142,309	4,741,984	6,278,607	67,823,285
Use tax	390,696	330,499	351,601	248,276	323,570	296,448	314,486	293,059	429,537				2,978,172
Sales tax	4,239,074	4,271,540	4,685,735	4,581,590	5,112,188	5,183,408	5,158,233	5,133,908	5,059,222				43,424,898
2009 Sales & Use Tax receipts	4,629,770	4,602,039	5,037,336	4,829,866	5,435,758	5,479,856	5,472,719	5,426,967	5,488,759	0	0	0	46,403,070
\$ change 2008 to 2009	(591,989)	(647,473)	(717,540)	(762,019)	(457,433)	(818,958)	(537,687)	(534,907)	(189,309)				(5,257,315)
% monthly change	-11.34%	-12.33%	-12.47%	-13.63%	-7.76%	-13.00%	-8.95%	-8.97%	-3.33%				
Cumulative % change		-11.84%	-12.06%	-12.46%	-11.46%	-11.75%	-11.33%	-11.02%	-10.18%				

**2008 vs. 2009 PPRTA Tax Revenue Comparison**





**Pikes Peak Rural Transportation Authority**  
**Revenue and Expense Summary**  
**For Year End December 31, 2009**  
**As of November 9, 2009**

**Modified Cash Basis<sup>1</sup>**  
(in dollars)

	Year-to-date Actual	Year-to-date Budget	Percent of YTD Budget Complete	Annual Budget Including Carryover	Actual Difference from Budget	Percent of Budget Complete
<b>Revenue</b>						
<b>Tax Collections:</b>						
<b>Capital:</b>						
Town of Green Mountain Falls	\$0	\$0	N/A	\$0	\$0	N/A
City of Manitou Springs	29,676	29,294	101%	38,459	(8,783)	77%
City of Colorado Springs	12,655,012	12,492,024	101%	16,400,383	(3,745,371)	77%
El Paso County	12,633,927	12,471,211	101%	16,373,058	(3,739,131)	77%
Town of Ramah	0	0	N/A	0	0	N/A
	<b>25,318,615</b>	<b>24,992,529</b>	<b>101%</b>	<b>32,811,900</b>	<b>(7,493,285)</b>	<b>77%</b>
<b>Maintenance:</b>						
Town of Green Mountain Falls	26,021	25,686	101%	33,722	(7,701)	77%
City of Manitou Springs	167,644	165,485	101%	217,260	(49,616)	77%
City of Colorado Springs	12,148,171	11,991,709	101%	15,743,536	(3,595,365)	77%
El Paso County	3,766,080	3,717,575	101%	4,880,686	(1,114,606)	77%
Town of Ramah	3,931	3,882	101%	5,096	(1,165)	77%
	<b>16,111,847</b>	<b>15,904,336</b>	<b>101%</b>	<b>20,880,300</b>	<b>(4,768,453)</b>	<b>77%</b>
<b>Public Transportation</b>	<b>4,603,384</b>	<b>4,544,096</b>	<b>101%</b>	<b>5,965,800</b>	<b>(1,362,416)</b>	<b>77%</b>
<b>Administration allocation of Tax Revenue</b>	<b>391,500</b>	<b>397,603</b>	<b>98%</b>	<b>522,000</b>	<b>(130,500)</b>	<b>75%</b>
Baptist Road RTA allocation of Tax Revenue	(22,276)	0	N/A	0	(22,276)	N/A
<b>Total Tax Revenue</b>	<b>46,403,070</b>	<b>45,838,564</b>	<b>101%</b>	<b>60,180,000</b>	<b>(13,776,930)</b>	<b>77%</b>
<b>Other Revenue Sources:</b>						
Public Transportation fare revenue	1,292,003	983,643	131%	1,180,372	111,631	109%
Interest Earnings	250,398	250,000	100%	300,000	(49,602)	83%
<b>Gross Revenue</b>	<b>47,945,471</b>	<b>47,072,207</b>	<b>102%</b>	<b>61,660,372</b>	<b>(13,714,901)</b>	<b>78%</b>
<b>State Tax Collection Fees</b>	<b>(108,937)</b>	<b>(165,000)</b>	<b>66%</b>	<b>(220,000)</b>	<b>(111,063)</b>	<b>50%</b>
<b>Net Revenue</b>	<b>47,836,534</b>	<b>46,907,207</b>	<b>102%</b>	<b>61,440,372</b>	<b>(13,603,838)</b>	<b>78%</b>
<b>Expenditures</b>						
<b>Administrative</b>	<b>333,845</b>	<b>435,000</b>	<b>77%</b>	<b>522,000</b>	<b>188,155</b>	<b>64%</b>
<b>Public Transportation</b>	<b>4,238,884</b>	<b>7,510,764</b>	<b>56%</b>	<b>9,012,917</b>	<b>4,774,033</b>	<b>47%</b>
<b>Maintenance</b>						
Town of Green Mountain Falls	33,201	27,806	119%	33,201	0	100%
City of Manitou Springs	0	181,553	0%	216,777	216,777	0%
City of Colorado Springs	11,466,237	16,131,037	71%	19,260,705	7,794,468	60%
El Paso County	5,188,320	4,713,543	110%	5,628,042	439,722	92%
Town of Ramah	2,812	4,352	65%	5,196	2,384	54%
	<b>16,690,570</b>	<b>21,058,291</b>	<b>79%</b>	<b>25,143,921</b>	<b>8,453,351</b>	<b>66%</b>

	Year-to-date Actual	Year-to-date Budget	Percent of YTD Budget Complete	Annual Budget Including Carryover	Actual Difference from Budget	Percent of Budget Complete
<b>Capital</b>						
<i>Town of Green Mountain Falls</i>						
Ute Pass Widening		0	N/A	0	0	N/A
<i>City of Manitou Springs</i>						
Manitou Ave Improvements	341,918	1,128,579	30%	1,347,540	1,005,622	25%
<i>City of Colorado Springs</i>						
Austin Bluffs Interchange	836,892	948,794	88%	1,132,875	295,983	74%
S. Metro Accessibility, Phase I	6,751,418	10,540,708	64%	12,585,766	5,834,348	54%
I-25 Interchange Companion Projects	37,000	30,988	119%	37,000	0	100%
Congestion/Incident Mgmt Signal Improvement	67,816	242,173	28%	289,158	221,342	23%
Powers Blvd Right of Way Protection		431,170	0%	514,823	514,823	0%
Austin Bluffs (Nevada to Academy)	153,837	711,884	22%	850,000	696,163	18%
Austin Bluffs (Barnes to Old Farm)	153,837	711,884	22%	850,000	696,163	18%
Roadway Safety and Traffic Operations	204,021	1,284,258	16%	1,533,424	1,329,403	13%
Vincent Drive Bridge	162,367	1,146,638	14%	1,369,103	1,206,736	12%
Pikes Peak Greenway Improvements		658,394	0%	786,133	786,133	0%
Woodmen Rd Widening & Interchange	3,412,858	13,851,397	25%	16,538,780	13,125,922	21%
On-Street Bikeway Improvements	69,158	297,804	23%	355,583	286,425	19%
Constitution/Circle Drive Improvements	109,885	95,760	115%	114,339	4,454	96%
Fillmore/El Paso Street Improvements	665	289,144	0%	345,242	344,577	0%
Vincent Drive Extension	402,509	5,623,319	7%	6,714,329	6,311,820	6%
30th Street Corridor Safety Improvements	261	34,346	1%	41,010	40,749	1%
Hancock Ave Bridge (T. Gap Floodway)	11,356	837,510	1%	1,000,000	988,644	1%
Cimarron Street Bridge	710,611	595,144	119%	710,611	0	100%
	13,084,491	38,331,315	34%	45,768,176	32,683,685	29%
<i>El Paso County</i>						
County Line Road Upgrade	58,736	897,295	7%	1,071,384	1,012,648	5%
Hodgen Rd upgrade to Arterial	384,177	3,123,207	12%	3,729,157	3,344,980	10%
Struthers Extension/Jackson Creek	24,781	20,754	119%	24,781	0	100%
Baptist Rd Widening (I-25 to Tari Dr.)	4,182	175,132	2%	209,110	204,928	2%
Marksheffel Road Widening & Extension	2,288,228	4,474,849	51%	5,343,038	3,054,810	43%
S. Metro Accessibility, Phase I	572,507	4,938,673	12%	5,896,851	5,324,344	10%
Meridian Rd Ext. (Falcon to US 24)	8,820	287,394	3%	343,153	334,333	3%
Meridian Rd Ext. (Woodmen to Rex Drive)	340,178	2,626,651	13%	3,136,261	2,796,083	11%
Stapleton/Judge Orr Extension		1,458,285	0%	1,741,215	1,741,215	0%
	3,681,609	18,002,240	20%	21,494,950	17,813,341	17%
Total Capital Expenditures	17,108,018	57,462,134	30%	68,610,666	51,502,648	25%
<b>Total Projects and Transportation expenses</b>	<b>38,037,472</b>	<b>86,031,188</b>	<b>44%</b>	<b>102,767,504</b>	<b>64,730,032</b>	<b>37%</b>
<b>Total Expenditures</b>	<b>38,371,317</b>	<b>86,466,188</b>	<b>44%</b>	<b>103,289,504</b>	<b>64,918,187</b>	<b>37%</b>
<b>Revenue Over/(Under) Expenditures</b>	<b>9,465,217</b>	<b>(39,558,981)</b>	<b>-24%</b>	<b>(41,849,132)</b>	<b>(78,522,025)</b>	<b>-23%</b>
<b>Carryover</b>		39,651,041		39,651,041	39,651,041	
<b>Net Activity including prior year carryover</b>	<b>9,465,217</b>	<b>92,060</b>	<b>10282%</b>	<b>(2,198,091)</b>	<b>(38,870,984)</b>	<b>25%</b>
<b>Reserves:</b>						
Board Appropriation of reserves		1,310,000	0%	1,310,000	1,310,000	0%
Reserve balance adjustment to 10% of budget		(33,000)	0%	1,099,000	1,099,000	0%
Replenish Reserve for prior year appropriation		(210,909)	0%	(210,909)	(210,909)	0%
<b>Net Reserve balance adjustment</b>	<b>0</b>	<b>1,066,091</b>	<b>0%</b>	<b>2,198,091</b>	<b>2,198,091</b>	<b>0%</b>
<b>Net Activity Less Reserve adjustment</b>	<b>\$9,465,217</b>	<b>\$1,158,151</b>	<b>817%</b>	<b>\$0</b>	<b>\$9,465,217</b>	<b>N/A</b>

<sup>1</sup> Tax revenues from the State are received two months after the reported month. This statement includes September sales and use tax revenue received in November.