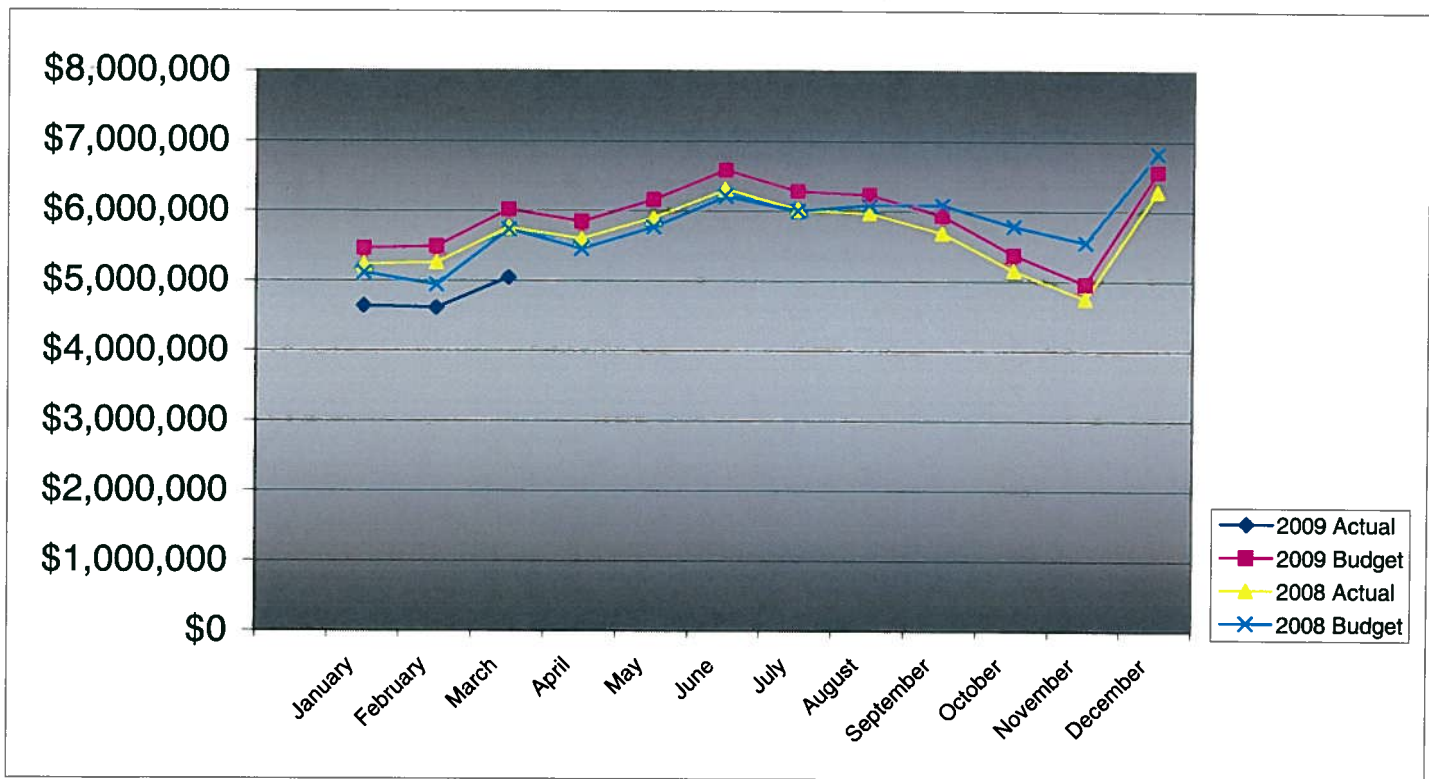


**PIKES PEAK RURAL TRANSPORTATION AUTHORITY  
2009 SALES TAX BUDGET COMPARISON TO ACTUAL**

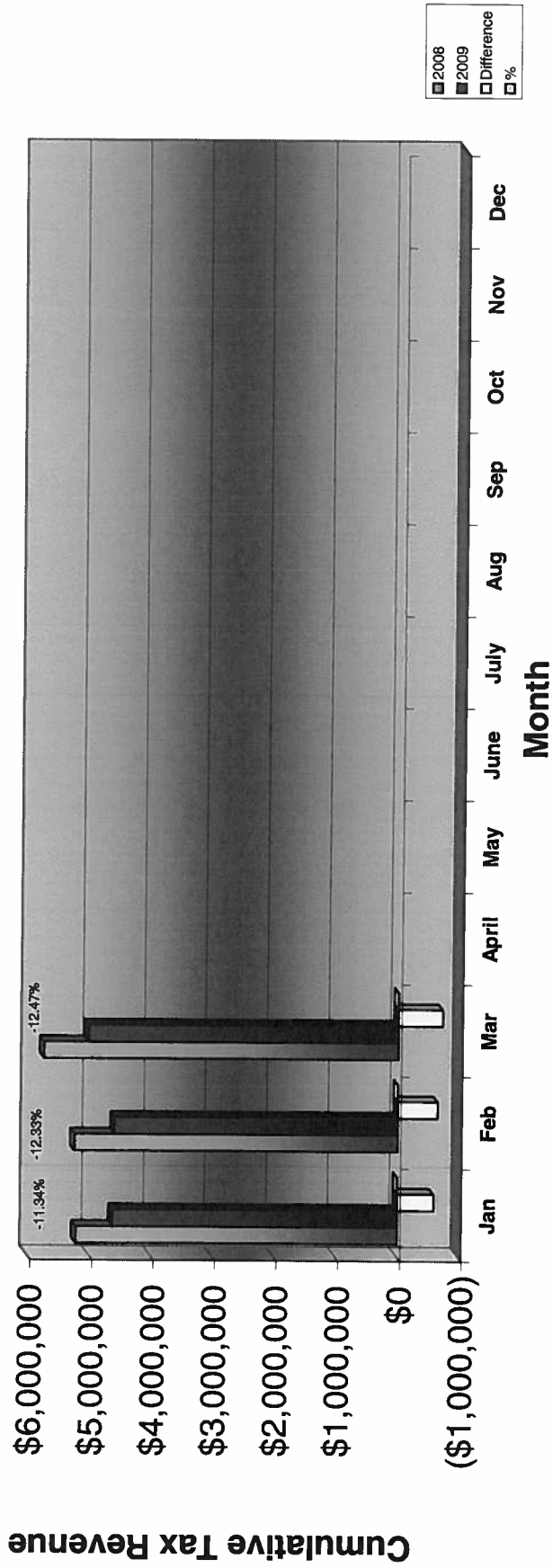
	Monthly			Cumulative Year-To-Date			2008 Actual
	Actual	Budget	Difference	Actual	Budget	Difference	
January	\$4,629,770	\$5,450,938	(\$821,168)	\$4,629,770	\$5,450,938	(\$821,168)	\$5,221,759
February	4,602,039	\$5,479,909	(\$877,870)	9,231,809	10,930,848	(1,699,039)	5,249,512
March	5,037,336	\$6,007,453	(\$970,117)	14,269,145	16,938,301	(2,669,156)	5,754,876
April		\$5,837,309				0	5,591,885
May		\$6,151,839				0	5,893,191
June		\$6,575,264				0	6,298,814
July		\$6,274,198				0	6,010,406
August		\$6,223,536				0	5,961,874
September		\$5,927,274				0	5,678,068
October		\$5,368,001				0	5,142,309
November		\$4,950,106				0	4,741,984
December		\$6,554,171				0	6,278,607
<b>Year Total</b>	<b>\$14,269,145</b>	<b>\$70,800,000</b>	<b>(\$2,669,156)</b>	<b>\$14,269,145</b>	<b>\$16,938,301</b>	<b>(\$2,669,156)</b>	<b>\$67,823,285</b>



**Pikes Peak RTA  
Sales and Use Tax Comparison for 2008 and 2009**

	Jan	Feb	Mar	April	May	June	July	Aug	Sep	Oct	Nov	Dec	Total
2008 Sales & Use Tax receipts	5,221,759	5,249,512	5,754,876	5,591,885	5,893,191	6,298,814	6,010,406	5,961,874	5,678,068	5,142,309	4,741,984	6,278,607	67,823,285
2009 Sales & Use Tax receipts	4,629,770	4,602,039	5,037,336	0	0	0	0	0	0	0	0	0	14,269,145
Use tax	390,696	330,499	351,601										1,072,796
Sales tax	4,239,074	4,271,540	4,685,735										13,196,349
\$ change 2008 to 2009	(591,989)	(647,473)	(717,540)										(1,957,002)
% monthly change	-11.34%	-12.33%	-12.47%										
Cumulative % change		-11.84%	-12.06%										

**2008 vs. 2009 PPRTA Tax Revenue Comparison**





**Pikes Peak Rural Transportation Authority  
Revenue and Expense Summary  
For Year End December 31, 2009  
As of May 10, 2009**

**Modified Cash Basis<sup>1</sup>**  
(in dollars)

	Year-to-date Actual	Year-to-date Budget	Percent of YTD Budget Complete	Annual Budget Including Carryover	Actual Difference from Budget	Percent of Budget Complete
<b>Revenue</b>						
<b>Tax Collections:</b>						
<b>Capital:</b>						
Town of Green Mountain Falls	\$0	\$0	N/A	\$0	\$0	N/A
City of Manitou Springs	7,809	9,280	84%	38,788	(30,979)	20%
City of Colorado Springs	5,098,696	6,059,191	84%	25,326,670	(20,227,974)	20%
El Paso County	2,671,338	3,174,566	84%	13,269,292	(10,597,954)	20%
Town of Ramah	0	0	N/A	0	0	N/A
	<b>7,777,843</b>	<b>9,243,037</b>	<b>84%</b>	<b>38,634,750</b>	<b>(30,856,907)</b>	<b>20%</b>
<b>Maintenance:</b>						
Town of Green Mountain Falls	7,993	9,499	84%	39,706	(31,713)	20%
City of Manitou Springs	51,500	61,202	84%	255,815	(204,315)	20%
City of Colorado Springs	3,731,901	4,434,918	84%	18,537,410	(14,805,509)	20%
El Paso County	1,156,934	1,374,878	84%	5,746,820	(4,589,886)	20%
Town of Ramah	1,208	1,435	84%	5,999	(4,791)	20%
	<b>4,949,536</b>	<b>5,881,933</b>	<b>84%</b>	<b>24,585,750</b>	<b>(19,636,214)</b>	<b>20%</b>
<b>Public Transportation</b>	<b>1,414,154</b>	<b>1,680,552</b>	<b>84%</b>	<b>7,024,500</b>	<b>(5,610,346)</b>	<b>20%</b>
<b>Administration allocation of Tax Revenue</b>	<b>130,500</b>	<b>124,884</b>	<b>104%</b>	<b>522,000</b>	<b>(391,500)</b>	<b>25%</b>
<b>Reserve portion of Revenue</b>	<b>8,250</b>	<b>7,895</b>		<b>33,000</b>	<b>(24,750)</b>	<b>25%</b>
Baptist Road RTA allocation of Tax Revenue	(11,138)	0	N/A	0	(11,138)	N/A
<b>Total Tax Revenue</b>	<b>14,269,145</b>	<b>16,938,301</b>	<b>84%</b>	<b>70,800,000</b>	<b>(56,530,855)</b>	<b>20%</b>
<b>Other Revenue Sources:</b>						
Public Transportation fare revenue	309,901	293,457	106%	880,372	(570,471)	35%
Interest Earnings	110,816	250,000	44%	1,000,000	(889,184)	11%
<b>Gross Revenue</b>	<b>14,689,862</b>	<b>17,481,758</b>	<b>84%</b>	<b>72,680,372</b>	<b>(57,990,510)</b>	<b>20%</b>
<b>State Tax Collection Fees</b>	<b>(41,262)</b>	<b>(36,667)</b>	<b>113%</b>	<b>(220,000)</b>	<b>(178,738)</b>	<b>19%</b>
<b>Net Revenue</b>	<b>14,648,600</b>	<b>17,445,092</b>	<b>84%</b>	<b>72,460,372</b>	<b>(57,811,772)</b>	<b>20%</b>

**Expenditures**

<b>Administrative</b>	90,360	130,500	69%	522,000	431,640	17%
<b>Public Transportation</b>	1,405,364	3,365,007	42%	10,095,022	8,689,658	14%
<b>Maintenance</b>						
Town of Green Mountain Falls	4,532	12,915	35%	40,147	35,615	11%
City of Manitou Springs		83,308	0%	258,969	258,969	0%
City of Colorado Springs	4,373,466	7,012,238	62%	21,798,164	17,424,698	20%
El Paso County	252,388	1,877,261	13%	5,835,633	5,583,245	4%
Town of Ramah	2,812	1,951	144%	6,066	3,254	46%
	<b>4,633,198</b>	<b>8,987,673</b>	<b>52%</b>	<b>27,938,979</b>	<b>23,305,781</b>	<b>17%</b>

	Year-to-date Actual	Year-to-date Budget	Percent of YTD Budget Complete	Annual Budget Including Carryover	Actual Difference from Budget	Percent of Budget Complete
<b>Capital</b>						
<i>Town of Green Mountain Falls</i>						
Ute Pass Widening		0	N/A	0	0	N/A
<i>City of Manitou Springs</i>						
Manitou Ave Improvements	166,140	431,192	39%	1,340,399	1,174,259	12%
<i>City of Colorado Springs</i>						
Austin Bluffs Interchange	114,135	443,414	26%	1,378,392	1,264,257	8%
S. Metro Accessibility, Phase I	1,546,919	4,055,268	38%	12,606,159	11,059,240	12%
I-25 Interchange Companion Projects		30,007	0%	93,280	93,280	0%
Congestion/Incident Mgmt Signal Improvement		85,087	0%	264,500	264,500	0%
Constitution/Circle Drive Improvements	65	0	N/A	0	(65)	N/A
Powers Blvd Right of Way Protection		1,440,927	0%	4,479,250	4,479,250	0%
Roadway Safety and Traffic Operations	24,946	437,232	6%	1,359,174	1,334,228	2%
Vincent Drive Bridge	34,002	437,676	8%	1,360,555	1,326,553	2%
Pikes Peak Greenway Improvements		234,154	0%	727,890	727,890	0%
Woodmen Rd Widening & Interchange	618,955	10,603,526	6%	32,962,000	32,343,045	2%
On-Street Bikeway Improvements	2,053	116,458	2%	362,019	359,966	1%
Fillmore/El Paso Street Improvements		20,771	0%	64,568	64,568	0%
Vincent Drive Extension	32,791	421,716	8%	1,310,940	1,278,149	3%
Cimarron Street Bridge	900	304,612	0%	946,912	946,012	0%
Austin Bluffs (Nevada to Academy)	4,180	273,436	2%	850,000	845,820	0%
Austin Fluffs (Barnes to Old Farm)	4,180	273,436	2%	850,000	845,820	0%
	2,383,126	19,177,719	12%	59,615,639	57,232,513	4%
<i>El Paso County</i>						
County Line Road Upgrade		36,383	0%	113,100	113,100	0%
Hodgen Rd upgrade to Arterial	55,473	417,392	13%	1,297,500	1,242,027	4%
Baptist Rd Widening (I-25 to Tari Dr.)		128,676	0%	400,000	400,000	0%
Marksheffel Road Widening & Extension	130,075	1,690,552	8%	5,255,230	5,125,155	2%
S. Metro Accessibility, Phase I	59,788	1,898,342	3%	5,901,164	5,841,376	1%
Meridian Rd Ext. (Falcon to US 24)	8,820	68,350	13%	212,472	203,652	4%
Meridian Rd Ext. (Woodmen to Rex Drive)	35,031	963,712	4%	2,995,783	2,960,752	1%
Stapleton/Judge Orr Extension		560,130	0%	1,741,215	1,741,215	0%
	289,187	5,763,537	5%	17,916,464	17,627,277	2%
Total Capital Expenditures	2,838,453	25,372,448	11%	78,872,502	76,034,049	4%
<b>Total Projects and Transportation expenses</b>	<b>8,877,015</b>	<b>37,725,129</b>	<b>24%</b>	<b>116,906,503</b>	<b>108,029,488</b>	<b>8%</b>
<b>Total Expenditures</b>	<b>8,967,375</b>	<b>37,855,629</b>	<b>24%</b>	<b>117,428,503</b>	<b>108,461,128</b>	<b>8%</b>
<b>Revenue Over/(Under) Expenditures</b>	<b>5,681,225</b>	<b>(20,410,537)</b>	<b>-28%</b>	<b>(44,968,131)</b>	<b>(166,272,900)</b>	<b>-13%</b>
<b>Carryover</b>		43,902,040		43,902,040	43,902,040	
<b>Net Activity including prior year carryover</b>	<b>5,681,225</b>	<b>23,491,503</b>	<b>24%</b>	<b>(1,066,091)</b>	<b>(122,370,860)</b>	<b>13%</b>
<b>Reserves:</b>						
Board Appropriation of reserves		1,310,000	0%	1,310,000	1,310,000	0%
Reserve balance adjustment to 10% of budget	(8,250)	(33,000)	25%	(33,000)	(24,750)	25%
Replenish Reserve for prior year appropriation		(210,909)	0%	(210,909)	(210,909)	0%
<b>Net Reserve balance adjustment</b>	<b>(8,250)</b>	<b>1,066,091</b>	<b>-1%</b>	<b>1,066,091</b>	<b>1,074,341</b>	<b>-1%</b>
<b>Net Activity Less Reserve adjustment</b>	<b>\$5,672,975</b>	<b>\$24,557,594</b>	<b>23%</b>	<b>\$0</b>	<b>\$5,672,975</b>	<b>N/A</b>

<sup>1</sup> Tax revenues from the State are received two months after the reported month. This statement includes March sales and use tax revenue received in May.