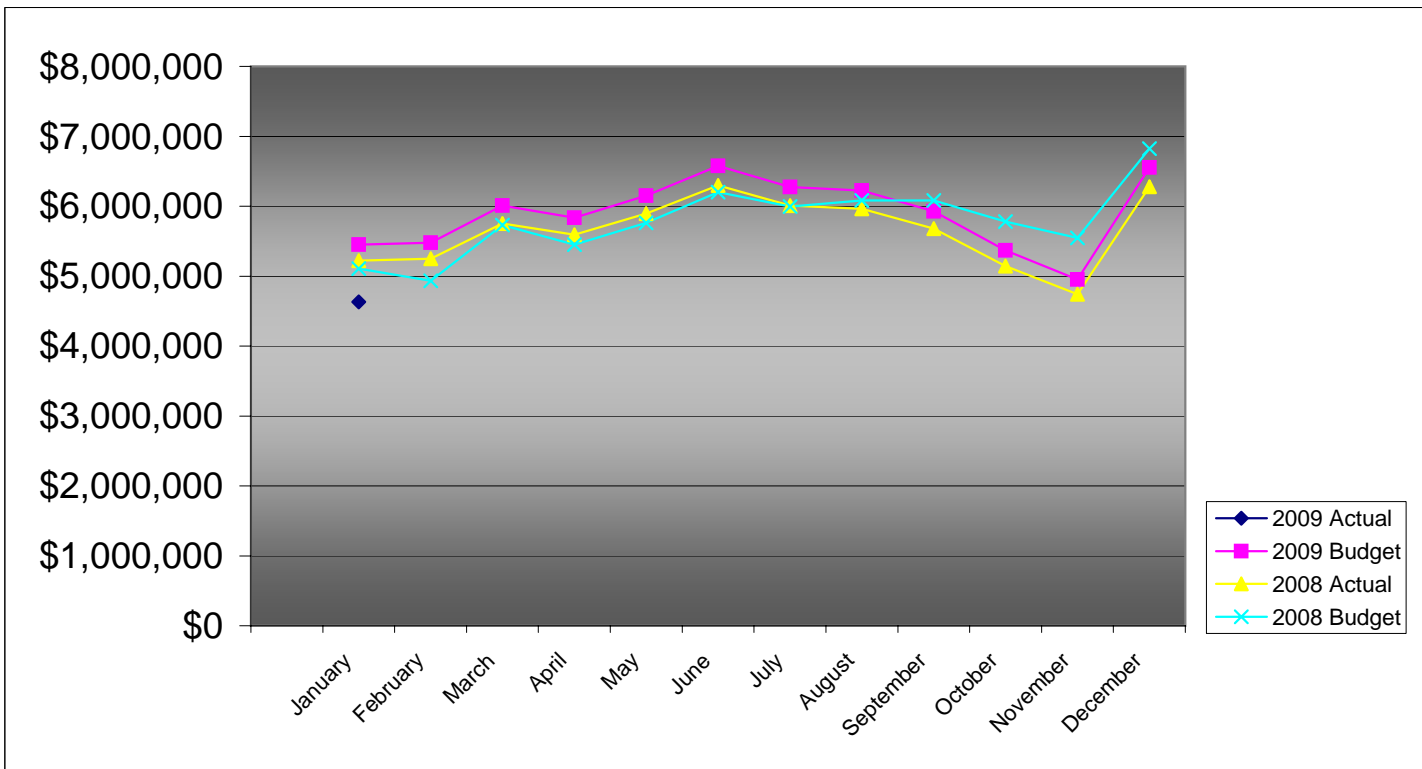


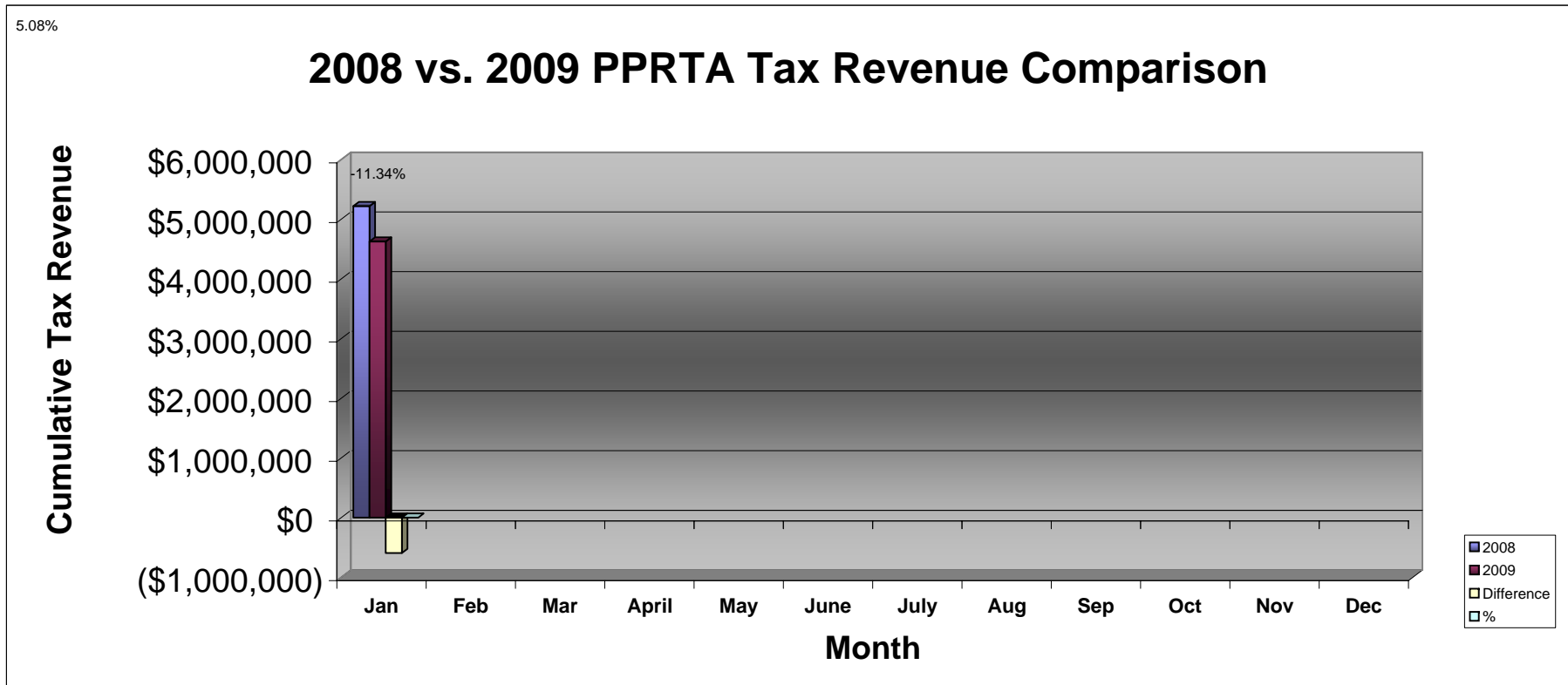
**PIKES PEAK RURAL TRANSPORTATION AUTHORITY
2009 SALES TAX BUDGET COMPARISON TO ACTUAL**

	-----Monthly-----			-----Cumulative Year-To-Date-----			2008 Actual
	Actual	Budget	Difference	Actual	Budget	Difference	
January	\$4,629,770	\$5,450,938	(\$821,168)	\$4,629,770	\$5,450,938	(\$821,168)	\$5,221,759
February		\$5,479,909				0	5,249,512
March		\$6,007,453				0	5,754,876
April		\$5,837,309				0	5,591,885
May		\$6,151,839				0	5,893,191
June		\$6,575,264				0	6,298,814
July		\$6,274,198				0	6,010,406
August		\$6,223,536				0	5,961,874
September		\$5,927,274				0	5,678,068
October		\$5,368,001				0	5,142,309
November		\$4,950,106				0	4,741,984
December		\$6,554,171				0	6,278,607
Year Total	\$4,629,770	\$70,800,000	(\$821,168)	\$4,629,770	\$5,450,938	(\$821,168)	\$67,823,285



**Pikes Peak RTA
Sales and Use Tax Comparison for 2008 and 2009**

	Jan	Feb	Mar	April	May	June	July	Aug	Sep	Oct	Nov	Dec	Total
2008 Sales & Use Tax receipts	5,221,759	5,249,512	5,754,876	5,591,885	5,893,191	6,298,814	6,010,406	5,961,874	5,678,068	5,142,309	4,741,984	6,278,607	67,823,285
Use tax	390,696												390,696
Sales tax	4,239,074												4,239,074
2009 Sales & Use Tax receipts	4,629,770	0	0	0	0	0	0	0	0	0	0	0	4,629,770
\$ change 2008 to 2009	(591,989)												(591,989)
% monthly change	-11.34%												
Cumulative % change													





Pikes Peak Rural Transportation Authority
Revenue and Expense Summary
For Year End December 31, 2009
As of March 9, 2009
Modified Cash Basis¹
(in dollars)

	Year-to-date Actual	Year-to-date Budget	Percent of YTD Budget Complete	Annual Budget Including Carryover	Actual Difference from Budget	Percent of Budget Complete
Revenue						
Tax Collections:						
Capital:						
Town of Green Mountain Falls	\$0	\$0	N/A	\$0	\$0	N/A
City of Manitou Springs	2,537	2,986	85%	38,788	(36,251)	7%
City of Colorado Springs	1,656,593	1,949,917	85%	25,326,670	(23,670,077)	7%
El Paso County	867,932	1,021,611	85%	13,269,292	(12,401,360)	7%
Town of Ramah	0	0	N/A	0	0	N/A
	2,527,062	2,974,515	85%	38,634,750	(36,107,688)	7%
Maintenance:						
Town of Green Mountain Falls	2,597	3,057	85%	39,706	(37,109)	7%
City of Manitou Springs	16,733	19,695	85%	255,815	(239,082)	7%
City of Colorado Springs	1,212,514	1,427,207	85%	18,537,410	(17,324,896)	7%
El Paso County	375,894	442,451	85%	5,746,820	(5,370,926)	7%
Town of Ramah	392	462	85%	5,999	(5,607)	7%
	1,608,130	1,892,873	85%	24,585,750	(22,977,620)	7%
Public Transportation	459,466	540,821	85%	7,024,500	(6,565,034)	7%
Administration allocation of Tax Revenue	43,500	40,189	108%	522,000	(478,500)	8%
Reserve portion of Revenue	2,750	2,541		33,000	(30,250)	8%
Baptist Road RTA allocation of Tax Revenue	(11,138)	0	N/A	0	(11,138)	N/A
Total Tax Revenue	4,629,770	5,450,938	85%	70,800,000	(66,170,230)	7%
Other Revenue Sources:						
Public Transportation fare revenue	98,426	73,364	134%	880,372	(781,946)	11%
Interest Earnings	57,023	83,333	68%	1,000,000	(942,977)	6%
Gross Revenue	4,785,219	5,607,636	85%	72,680,372	(67,895,153)	7%
State Tax Collection Fees	(13,754)	(18,333)	75%	(220,000)	(206,246)	6%
Net Revenue	4,771,465	5,589,303	85%	72,460,372	(67,688,907)	7%
Expenditures						
Administrative	29,726	43,500	68%	522,000	492,274	6%
Public Transportation	174,471	841,252	21%	10,095,022	9,920,551	2%
Maintenance						
Town of Green Mountain Falls		3,091	0%	40,147	40,147	0%
City of Manitou Springs		19,938	0%	258,969	258,969	0%
City of Colorado Springs	518,422	1,678,255	31%	21,798,164	21,279,742	2%
El Paso County		449,289	0%	5,835,633	5,835,633	0%
Town of Ramah		467	0%	6,066	6,066	0%
	518,422	2,151,040	24%	27,938,979	27,420,557	2%

	Year-to-date Actual	Year-to-date Budget	Percent of YTD Budget Complete	Annual Budget Including Carryover	Actual Difference from Budget	Percent of Budget Complete
Capital						
<i>Town of Green Mountain Falls</i>						
Ute Pass Widening		0	N/A	0	0	N/A
<i>City of Manitou Springs</i>						
Manitou Ave Improvements		103,198	0%	1,340,399	1,340,399	0%
<i>City of Colorado Springs</i>						
Austin Bluffs Interchange	73,070	106,123	69%	1,378,392	1,305,322	5%
S. Metro Accessibility, Phase I	41,170	970,556	4%	12,606,159	12,564,989	0%
I-25 Interchange Companion Projects		7,182	0%	93,280	93,280	0%
Congestion/Incident Mgmt Signal Improvement		20,364	0%	264,500	264,500	0%
Powers Blvd Right of Way Protection		344,860	0%	4,479,250	4,479,250	0%
Roadway Safety and Traffic Operations		104,644	0%	1,359,174	1,359,174	0%
Vincent Drive Bridge		104,750	0%	1,360,555	1,360,555	0%
Pikes Peak Greenway Improvements		56,041	0%	727,890	727,890	0%
Woodmen Rd Widening & Interchange	49,107	2,537,766	2%	32,962,000	32,912,893	0%
On-Street Bikeway Improvements		27,872	0%	362,019	362,019	0%
Fillmore/El Paso Street Improvements		4,971	0%	64,568	64,568	0%
Vincent Drive Extension		100,930	0%	1,310,940	1,310,940	0%
Cimarron Street Bridge		72,903	0%	946,912	946,912	0%
Austin Bluffs (Nevada to Academy)	2,105	65,442	3%	850,000	847,895	0%
Austin Bluffs (Barnes to Old Farm)	2,105	65,442	3%	850,000	847,895	0%
	167,557	4,589,847	4%	59,615,639	59,448,082	0%
<i>El Paso County</i>						
County Line Road Upgrade		8,708	0%	113,100	113,100	0%
Hodgen Rd upgrade to Arterial		99,895	0%	1,297,500	1,297,500	0%
Baptist Rd Widening (I-25 to Tari Dr.)		30,796	0%	400,000	400,000	0%
Marksheffel Road Widening & Extension		404,604	0%	5,255,230	5,255,230	0%
S. Metro Accessibility, Phase I		454,334	0%	5,901,164	5,901,164	0%
Meridian Rd Ext. (Falcon to US 24)		16,358	0%	212,472	212,472	0%
Meridian Rd Ext. (Woodmen to Rex Drive)		230,647	0%	2,995,783	2,995,783	0%
Stapleton/Judge Orr Extension		134,057	0%	1,741,215	1,741,215	0%
	0	1,379,400	0%	17,916,464	17,916,464	0%
Total Capital Expenditures	167,557	6,072,445	3%	78,872,502	78,704,945	0%
Total Projects and Transportation expenses	860,450	9,064,738	9%	116,906,503	116,046,053	1%
Total Expenditures	890,176	9,108,238	10%	117,428,503	116,538,327	1%
Revenue Over/(Under) Expenditures	3,881,289	(3,518,935)	-110%	(44,968,131)	(184,227,234)	-9%
Carryover		43,902,040		43,902,040	43,902,040	
Net Activity including prior year carryover	3,881,289	40,383,105	10%	(1,066,091)	(140,325,194)	9%
Reserves:						
Board Appropriation of reserves		1,310,000	0%	1,310,000	1,310,000	0%
Reserve balance adjustment to 10% of budget		(33,000)	0%	(33,000)	(33,000)	0%
Replenish Reserve for prior year appropriation		(210,909)	0%	(210,909)	(210,909)	0%
Net Reserve balance adjustment	0	1,066,091	0%	1,066,091	1,066,091	0%
Net Activity Less Reserve adjustment	\$3,881,289	\$41,449,196	9%	\$0	\$3,881,289	N/A

¹ Tax revenues from the State are received two months after the reported month. This statement includes January sales and use tax revenue received in March.

Year-to-date Actual	Year-to-date Budget	Percent of YTD Budget Complete	Annual Budget Including Carryover	Actual Difference from Budget	Percent of Budget Complete
--------------------------------	--------------------------------	---	--	--	---
