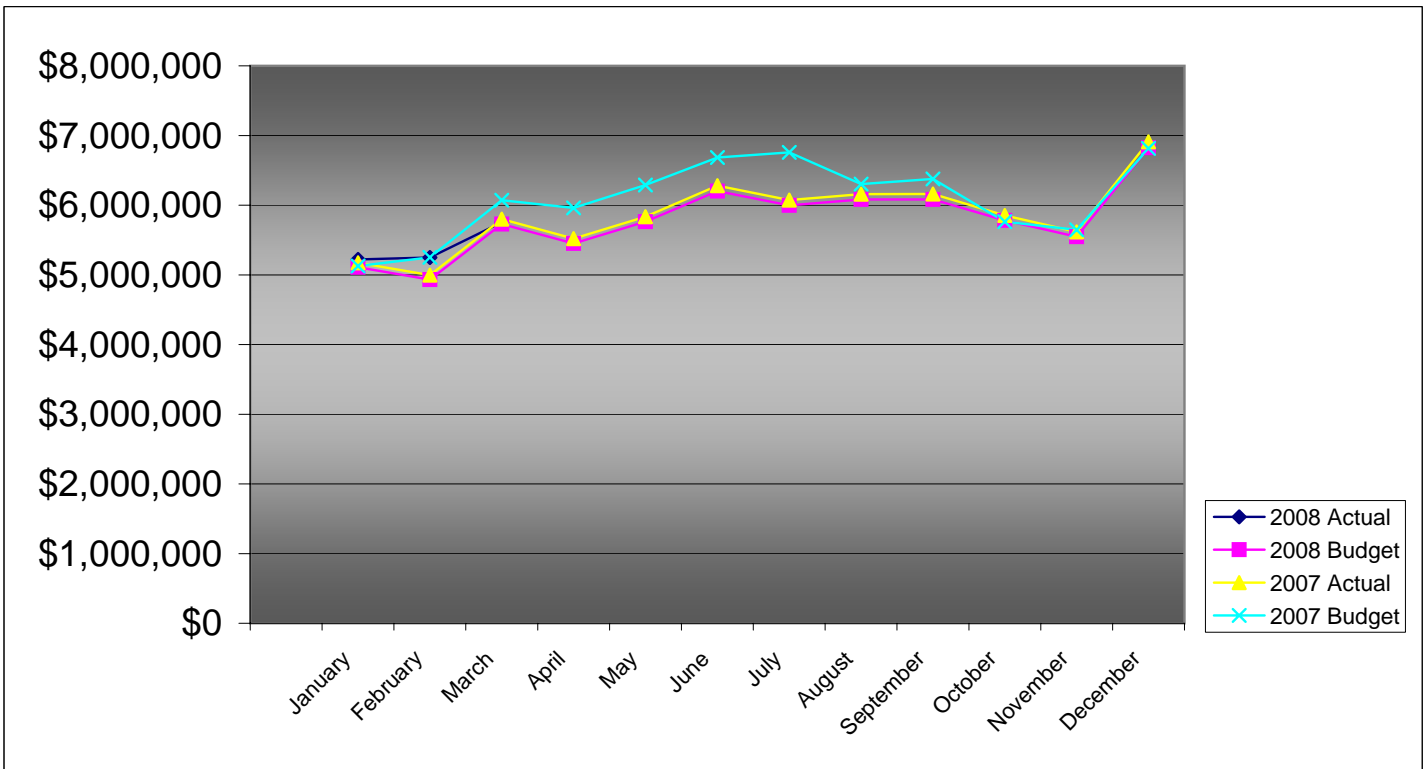


**PIKES PEAK RURAL TRANSPORTATION AUTHORITY  
2008 SALES TAX BUDGET COMPARISON TO ACTUAL**

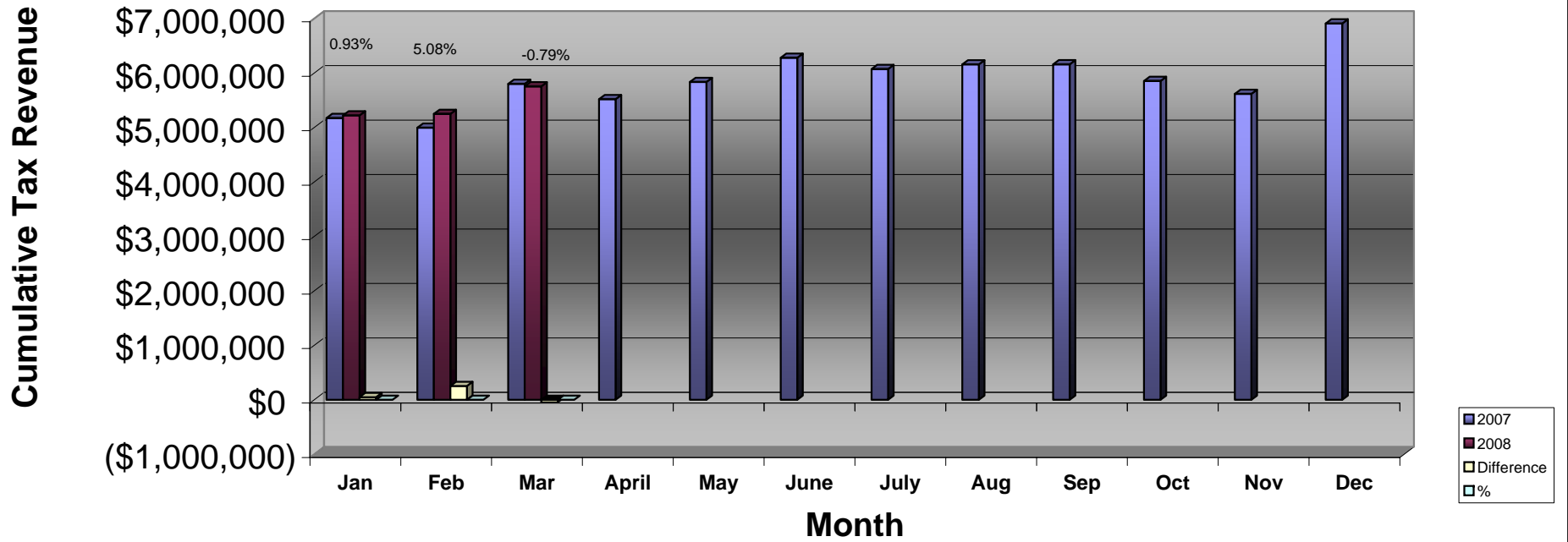
	-----Monthly-----			-----Cumulative Year-To-Date-----			2007 Actual
	Actual	Budget	Difference	Actual	Budget	Difference	
January	\$5,221,759	\$5,109,102	\$112,657	\$5,221,759	\$5,109,102	\$112,657	\$5,173,846
February	5,249,512	4,933,186	316,326	10,471,271	10,042,288	428,983	4,995,700
March	5,754,876	5,728,253	26,622	16,226,147	15,770,541	455,605	5,800,843
April		5,451,113					5,520,191
May		5,762,494					5,835,518
June		6,202,535					6,281,135
July		5,996,561					6,072,551
August		6,081,986					6,159,058
September		6,083,364					6,160,454
October		5,780,884					5,854,141
November		5,546,949					5,617,241
December		6,823,571					6,910,041
<b>Year Total</b>	<b>\$16,226,147</b>	<b>\$69,500,000</b>	<b>\$455,605</b>	<b>\$16,226,147</b>	<b>\$15,770,541</b>	<b>\$455,605</b>	<b>\$70,380,719</b>



**Pikes Peak RTA  
Sales and Use Tax Comparison for 2007 and 2008**

	Jan	Feb	Mar	April	May	June	July	Aug	Sep	Oct	Nov	Dec	Total
2007 Sales & Use Tax receipts	5,173,846	4,995,700	5,800,843	5,520,191	5,835,518	6,281,135	6,072,551	6,159,058	6,160,454	5,854,141	5,617,241	6,910,041	70,380,719
Use tax	494,165	398,691	431,728										1,324,584
Sales tax	4,727,594	4,850,821	5,323,148										14,901,563
2008 Sales & Use Tax receipts	5,221,759	5,249,512	5,754,876										16,226,147
\$ change 2007 to 2008	47,913	253,812	(45,967)										255,758
% monthly change	0.93%	5.08%	-0.79%										
Cumulative % change		2.97%	1.60%										

### 2007 vs. 2008 PPRTA Tax Revenue Comparison





**Pikes Peak Rural Transportation Authority**  
**Revenue and Expense Summary**  
**For Year End December 31, 2008**  
**As of May 13, 2008**  
**Modified Cash Basis<sup>1</sup>**  
(in dollars)

	Year-to-date Actual	Year-to-date Budget	Percent of YTD Budget Complete	Annual Budget Including Carryover	Actual Difference from Budget	Percent of Budget Complete
<b>Revenue</b>						
<b>Tax Collections:</b>						
<b>Capital:</b>						
Town of Green Mountain Falls	\$2,010	\$1,953	103%	\$8,614	(\$6,604)	23%
City of Manitou Springs	10,153	9,865	103%	43,508	(33,355)	23%
City of Colorado Springs	5,894,591	5,727,765	103%	25,261,035	(19,366,444)	23%
El Paso County	2,947,296	2,863,883	103%	12,630,518	(9,683,222)	23%
	<u>8,854,050</u>	<u>8,603,466</u>	<u>103%</u>	<u>37,943,675</u>	<u>(29,089,625)</u>	<u>23%</u>
<b>Maintenance:</b>						
Town of Green Mountain Falls	9,100	8,842	103%	38,996	(29,896)	23%
City of Manitou Springs	58,637	56,978	103%	251,287	(192,650)	23%
City of Colorado Springs	4,249,320	4,129,058	103%	18,210,291	(13,960,971)	23%
El Paso County	1,317,338	1,280,056	103%	5,645,401	(4,328,063)	23%
	<u>5,634,395</u>	<u>5,474,933</u>	<u>103%</u>	<u>24,145,975</u>	<u>(18,511,580)</u>	<u>23%</u>
<b>Public Transportation</b>	<u>1,609,827</u>	<u>1,564,267</u>	<u>103%</u>	<u>6,898,850</u>	<u>(5,289,023)</u>	<u>23%</u>
<b>Administration allocation of Tax Revenue</b>	<u>127,875</u>	<u>127,875</u>	<u>100%</u>	<u>511,500</u>	<u>(383,625)</u>	<u>25%</u>
<b>Total Tax Revenue</b>	<u><b>16,226,147</b></u>	<u><b>15,770,541</b></u>	<u><b>103%</b></u>	<u><b>69,500,000</b></u>	<u><b>(53,273,853)</b></u>	<u><b>23%</b></u>
<b>Other Revenue Sources:</b>						
Public Transportation fare revenue	264,070	164,053	161%	492,158	(228,088)	54%
Interest Earnings	637,208	666,667	96%	2,000,000	(1,362,792)	32%
<b>Gross Revenue</b>	<u><b>17,127,425</b></u>	<u><b>16,601,260</b></u>	<u><b>103%</b></u>	<u><b>71,992,158</b></u>	<u><b>(54,864,733)</b></u>	<u><b>24%</b></u>
<b>State Tax Collection Fees</b>	<u>(46,431)</u>	<u>(62,500)</u>	<u>74%</u>	<u>(250,000)</u>	<u>(203,569)</u>	<u>19%</u>
<b>Net Revenue</b>	<u><b>17,080,994</b></u>	<u><b>16,538,760</b></u>	<u><b>103%</b></u>	<u><b>71,742,158</b></u>	<u><b>(54,661,164)</b></u>	<u><b>24%</b></u>
<b>Expenditures</b>						
<b>Administrative</b>	98,289	127,875	77%	511,500	413,211	19%
<b>Public Transportation</b>	2,201,036	2,829,569	78%	8,488,706	6,287,670	26%
<b>Maintenance</b>						
Town of Green Mountain Falls	11,436	12,248	93%	40,139	28,703	28%
City of Manitou Springs	0	102,751	0%	336,735	336,735	0%
City of Colorado Springs	3,903,556	6,036,426	65%	19,782,476	15,878,920	20%
El Paso County	1,654,550	2,116,922	78%	6,937,542	5,282,992	24%
	<u>5,569,542</u>	<u>8,268,347</u>	<u>67%</u>	<u>27,096,892</u>	<u>21,527,350</u>	<u>21%</u>

**Capital***Town of Green Mountain Falls*

Ute Pass Widening	0	92,895	0%	304,435	304,435	0%
-------------------	---	--------	----	---------	---------	----

*City of Manitou Springs*

Manitou Ave Improvements	0	373,292	0%	1,223,345	1,223,345	0%
--------------------------	---	---------	----	-----------	-----------	----

*City of Colorado Springs*

Austin Bluffs Interchange	3,905,556	4,774,401	82%	15,646,588	11,741,032	25%
S. Metro Accessibility, Phase I	1,769,579	4,217,078	42%	13,820,138	12,050,559	13%
Austin Bluffs/Nevada Improvements	0	0	N/A	0	0	N/A
I-25 Interchange Companion Projects	0	45,771	0%	150,000	150,000	0%
Fillmore/Union Improvements	0	58,194	0%	190,713	190,713	0%
Congestion/Incident Mgmt Signal Improvement	220,272	95,967	230%	314,500	94,228	70%
Powers Blvd Right of Way Protection	0	1,618,933	0%	5,305,542	5,305,542	0%
Academy/Fountain Safety Improvements	0	0	N/A	0	0	N/A
Roadway Safety and Traffic Operations	70,344	437,624	16%	1,434,174	1,363,830	5%
Vincent Drive Bridge	16,550	466,310	4%	1,528,182	1,511,632	1%
Union/Palmer Park Improvements	0	1,178	0%	3,862	3,862	0%
Constitution/Chelton Rd Improvements	0	10,465	0%	34,297	34,297	0%
Pikes Peak Greenway Improvements	56,178	108,782	52%	356,500	300,322	16%
Woodmen Rd Widening & Interchange	88,850	5,150,485	2%	16,879,087	16,790,237	1%
On-Street Bikeway Improvements	3,153	15,257	21%	50,000	46,847	6%
Constitution/Circle Drive Improvements	42,668	289,515	15%	948,793	906,125	4%
Fillmore Street/T. Gap to Hancock	0	30,918	0%	101,324	101,324	0%
Fillmore/El Paso Street Improvements	129,007	66,894	193%	219,223	90,216	59%
Vincent Drive Extension	15,939	449,111	4%	1,471,818	1,455,879	1%
Academy Blvd./Pikes Peak Improvements	0	277	0%	909	909	0%
Cimarron Street Bridge	2,572,331	1,951,575	132%	6,395,669	3,823,338	40%
30th Street Corridor Safety Improvements <sup>2</sup>	22,757	0	N/A	0	(22,757)	N/A
	8,913,184	19,788,734	45%	64,851,319	55,938,135	14%

*El Paso County*

Baptist-Hodgen Connection	0	0	N/A	0	0	N/A
County Line Road Upgrade	0	460,761	0%	1,510,000	1,510,000	0%
Hodgen Rd upgrade to Arterial	12,481	604,788	2%	1,982,000	1,969,519	1%
Baptist Rd Widening(I-25 to Tari Dr.)	0	829,432	0%	2,718,200	2,718,200	0%
Baptist Rd Widening(Mitchell Ave to I-25)	0	303,608	0%	994,980	994,980	0%
Struthers Extension/Jackson Creek	851,592	368,548	231%	1,207,800	356,208	71%
Marksheffel Road Widening & Extension	328,095	860,078	38%	2,818,633	2,490,538	12%
S. Metro Accessibility, Phase I	3,302,400	2,376,057	139%	7,786,775	4,484,375	42%
Akers Drive	0	0	N/A	0	0	N/A
Meridian Rd Ext. (Falcon to US 24)	0	151,804	0%	497,490	497,490	0%
Meridian Rd Ext. (Woodmen to Rex Drive)	14,281	414,075	3%	1,357,000	1,342,719	1%
	4,508,849	6,369,151	71%	20,872,878	16,364,029	22%

## Total Capital Expenditures

	13,422,033	26,624,072	50%	87,251,977	73,829,944	15%
--	------------	------------	-----	------------	------------	-----

## Total Projects and Transportation expenses

	21,192,611	37,721,988	56%	122,837,575	101,644,964	17%
--	------------	------------	-----	-------------	-------------	-----

## Total Expenditures

	21,290,900	37,849,863	56%	123,349,075	102,058,175	17%
--	------------	------------	-----	-------------	-------------	-----

## Revenue Over/(Under) Expenditures

	(4,209,906)	(21,311,102)	20%	(51,606,917)	(156,719,339)	8%
--	-------------	--------------	-----	--------------	---------------	----

## Carryover

	52,481,570			52,481,570	52,481,570	
--	------------	--	--	------------	------------	--

## Net Activity including prior year carryover

	(4,209,906)	31,170,468	-14%	874,653	(104,237,769)	-8%
--	-------------	------------	------	---------	---------------	-----

## Reserves:

Board Appropriation of reserves	150,000	150,000	100%	150,000	0	100%
Reserve balance adjustment to 10% of budget	272,924	272,924	100%	272,924	0	100%
Replenish Reserve for prior year appropriation	(1,297,577)	(1,297,577)	100%	(1,297,577)	0	100%
<b>Net Reserve balance adjustment</b>	<b>(874,653)</b>	<b>(874,653)</b>	<b>100%</b>	<b>(874,653)</b>	<b>0</b>	<b>100%</b>

## Net Activity Less Reserve adjustment

	(\$5,084,559)	\$30,295,815	-17%	\$0	(\$5,084,559)	N/A
--	---------------	--------------	------	-----	---------------	-----

<sup>1</sup> Tax revenues from the State are received two months after the reported month. This statement includes March 2008 tax receipts.

<sup>2</sup> Currently there is a carryover of under spent 2007 funds to cover the 30th Street overage in 2008