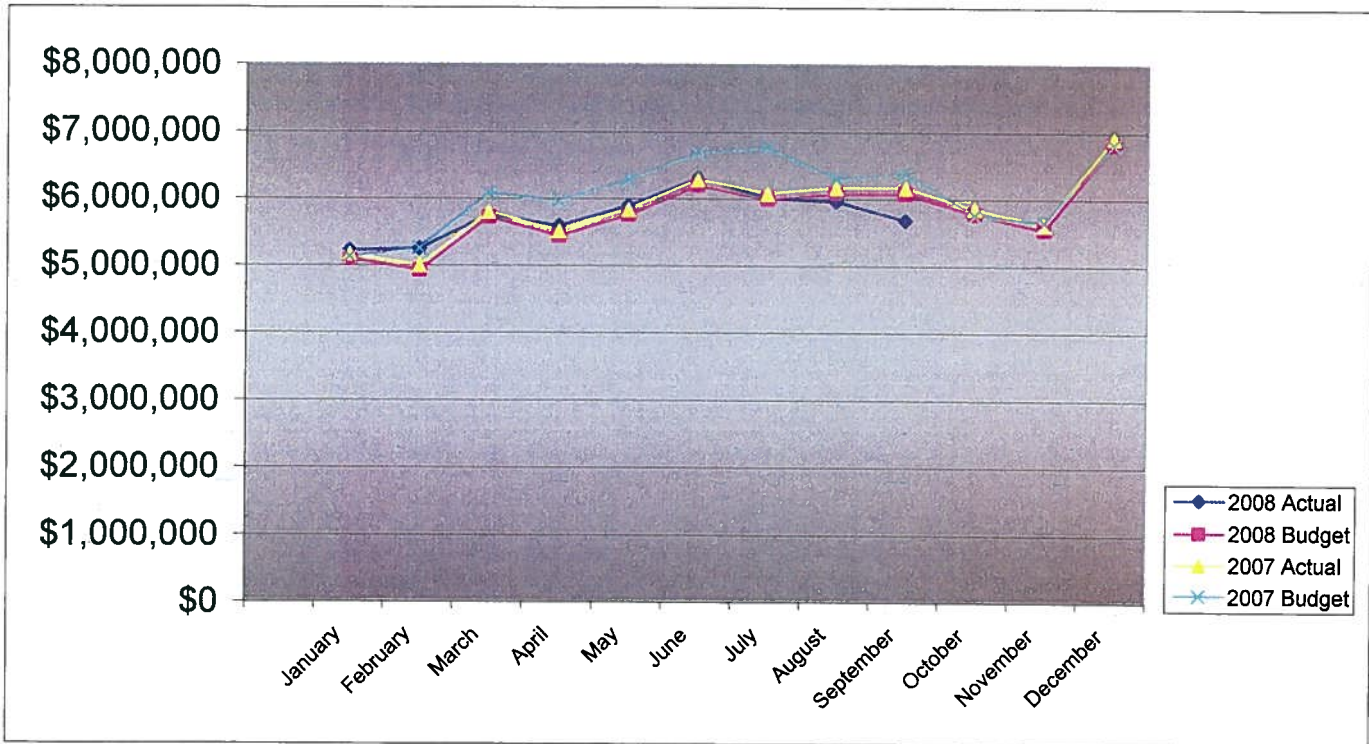


**PIKES PEAK RURAL TRANSPORTATION AUTHORITY
2008 SALES TAX BUDGET COMPARISON TO ACTUAL**

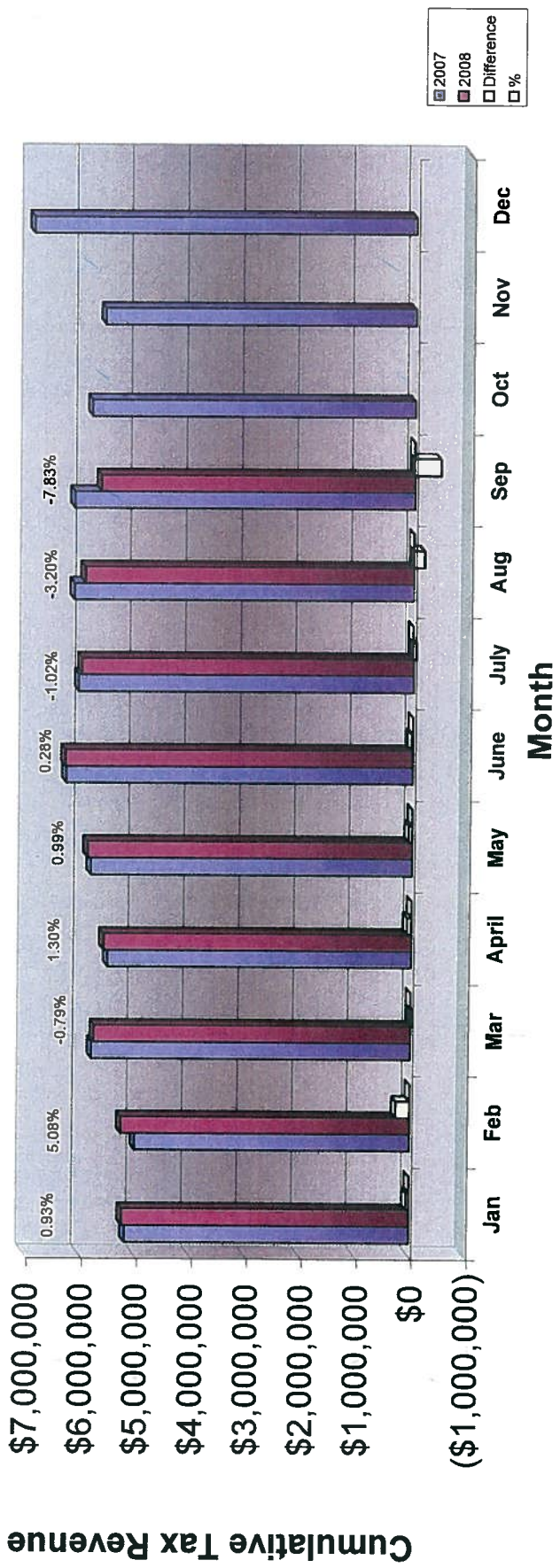
	Monthly			Cumulative Year-To-Date			2007 Actual
	Actual	Budget	Difference	Actual	Budget	Difference	
January	\$5,221,759	\$5,109,102	\$112,657	\$5,221,759	\$5,109,102	\$112,657	\$5,173,846
February	5,249,512	4,933,186	316,326	10,471,271	10,042,288	428,983	4,995,700
March	5,754,876	5,728,253	26,622	16,226,147	15,770,541	455,605	5,800,843
April	5,591,885	5,451,113	140,772	21,818,032	21,221,655	596,377	5,520,191
May	5,893,191	5,762,494	130,697	27,711,223	26,984,149	727,074	5,835,518
June	6,298,814	6,202,535	96,279	34,010,037	33,186,683	823,353	6,281,135
July	6,010,406	5,996,561	13,845	40,020,443	39,183,244	837,198	6,072,551
August	5,961,874	6,081,986	(120,112)	45,982,317	45,265,230	717,086	6,159,058
September	5,678,068	6,083,364	(405,296)	51,660,385	51,348,595	311,790	6,160,454
October		5,780,884					5,854,141
November		5,546,949					5,617,241
December		6,823,571					6,910,041
Year Total	\$51,660,385	\$69,500,000	\$311,789	\$51,660,385	\$51,348,595	\$311,790	\$70,380,719



**Pikes Peak RTA
Sales and Use Tax Comparison for 2007 and 2008**

	Jan	Feb	Mar	April	May	June	July	Aug	Sep	Oct	Nov	Dec	Total
2007 Sales & Use Tax receipts	5,173,846	4,995,700	5,800,843	5,520,191	5,835,518	6,281,135	6,072,551	6,159,058	6,160,454	5,854,141	5,617,241	6,910,041	70,380,719
Use tax	494,165	398,691	431,728	414,031	494,810	519,689	442,162	405,323	468,743				4,069,342
Sales tax	4,727,594	4,850,821	5,323,148	5,177,854	5,398,381	5,779,125	5,568,244	5,556,551	5,209,325				47,591,043
2008 Sales & Use Tax receipts	5,221,759	5,249,512	5,754,876	5,591,885	5,893,191	6,298,814	6,010,406	5,961,874	5,678,068				51,660,385
\$ change 2007 to 2008	47,913	253,812	(45,967)	71,694	57,673	17,679	(62,145)	(197,184)	(482,386)				(338,911)
% monthly change	0.93%	5.08%	-0.79%	1.30%	0.99%	0.28%	-1.02%	-3.20%	-7.83%				
Cumulative % change	2.97%	1.60%	1.52%	1.41%	1.20%	0.86%	0.31%	0.31%	-0.65%				

2007 vs. 2008 PPRTA Tax Revenue Comparison





**Pikes Peak Rural Transportation Authority
Revenue and Expense Summary
For Year End December 31, 2008
As of November 11, 2008**

Modified Cash Basis¹

(in dollars)

	Year-to-date Actual	Year-to-date Budget	Percent of YTD Budget Complete	Annual Budget Including Carryover	Actual Difference from Budget	Percent of Budget Complete
Revenue						
Tax Collections:						
Capital:						
Town of Green Mountain Falls	\$6,406	\$6,364	101%	\$8,614	(\$2,208)	74%
City of Manitou Springs	32,352	32,141	101%	43,508	(11,156)	74%
City of Colorado Springs	18,783,707	18,661,485	101%	25,261,035	(6,477,328)	74%
El Paso County	9,391,853	9,330,744	101%	12,630,518	(3,238,665)	74%
	28,214,318	28,030,734	101%	37,943,675	(9,729,357)	74%
Maintenance:						
Town of Green Mountain Falls	28,997	28,808	101%	38,996	(9,999)	74%
City of Manitou Springs	186,853	185,637	101%	251,287	(64,434)	74%
City of Colorado Springs	13,540,885	13,452,777	101%	18,210,291	(4,669,406)	74%
El Paso County	4,197,831	4,170,517	101%	5,645,401	(1,447,570)	74%
	17,954,566	17,837,739	101%	24,145,975	(6,191,409)	74%
Public Transportation	5,129,876	5,096,497	101%	6,898,850	(1,768,974)	74%
Administration allocation of Tax Revenue	383,625	383,625	100%	511,500	(127,875)	75%
Baptist Road RTA allocation of Tax Revenue	(22,000)	0	N/A	0	(22,000)	N/A
Total Tax Revenue	51,660,385	51,348,595	101%	69,500,000	(17,839,615)	74%
Other Revenue Sources:						
Public Transportation fare revenue	1,050,820	801,238	131%	961,486	89,334	109%
Interest Earnings	1,297,779	1,666,667	78%	2,000,000	(702,221)	65%
Gross Revenue	54,008,984	53,816,500	100%	72,461,486	(18,452,502)	75%
State Tax Collection Fees	(130,679)	(187,500)	70%	(250,000)	(119,321)	52%
Net Revenue	53,878,305	53,629,000	100%	72,211,486	(18,333,181)	75%
Expenditures						
Administrative	330,342	383,625	86%	511,500	181,158	65%
Public Transportation	6,633,939	8,573,843	77%	10,288,611	3,654,672	64%
Maintenance						
Town of Green Mountain Falls	41,652	34,235	122%	41,652	0	100%
City of Manitou Springs	106,170	279,002	38%	339,450	233,280	31%
City of Colorado Springs	13,179,072	15,079,339	87%	18,346,416	5,167,344	72%
El Paso County	6,256,642	6,069,481	103%	7,384,490	1,127,848	85%
	19,583,536	21,462,057	91%	26,112,008	6,528,472	75%

	Year-to-date Actual	Year-to-date Budget	Percent of YTD Budget Complete	Annual Budget Including Carryover	Actual Difference from Budget	Percent of Budget Complete
Capital						
<i>Town of Green Mountain Falls</i>						
Ute Pass Widening	294,659	250,128	118%	304,320	9,661	97%
<i>City of Manitou Springs</i>						
Manitou Ave Improvements	133,951	1,253,026	11%	1,524,505	1,390,554	9%
<i>City of Colorado Springs</i>						
Austin Bluffs Interchange	12,745,098	13,004,622	98%	15,822,192	3,077,094	81%
S. Metro Accessibility, Phase I	3,336,313	11,120,847	30%	13,530,280	10,193,967	25%
I-25 Interchange Companion Projects	56,720	123,288	46%	150,000	93,280	38%
Congestion/Incident Mgmt Signal Improvement	361,354	355,097	102%	432,032	70,678	84%
Powers Blvd Right of Way Protection	1,526,292	4,936,092	31%	6,005,542	4,479,250	25%
Roadway Safety and Traffic Operations	385,407	909,260	42%	1,106,259	720,852	35%
Vincent Drive Bridge	105,843	1,256,048	8%	1,528,182	1,422,339	7%
Pikes Peak Greenway Improvements	0	335,544	0%	408,243	408,243	0%
Woodmen Rd Widening & Interchange	235,107	13,881,240	2%	16,888,737	16,653,630	1%
On-Street Bikeway Improvements	25,689	149,670	17%	182,097	156,408	14%
Constitution/Circle Drive Improvements	151,052	1,039,557	15%	1,264,786	1,113,734	12%
Fillmore/El Paso Street Improvements	142,264	173,088	82%	210,589	68,325	68%
Vincent Drive Extension	103,510	1,209,721	9%	1,471,818	1,368,308	7%
Academy Blvd./Pikes Peak Improvements	557	458	122%	557	0	100%
Cimarron Street Bridge	5,344,129	5,398,299	99%	6,567,890	1,223,761	81%
30th Street Corridor Safety Improvements	22,757	52,412	43%	63,767	41,010	36%
	24,542,092	53,945,242	45%	65,632,971	41,090,879	37%
<i>El Paso County</i>						
County Line Road Upgrade	145,159	286,245	51%	348,263	203,104	42%
Hodgen Rd upgrade to Arterial	130,121	959,619	14%	1,167,529	1,037,408	11%
Baptist Rd Widening(I-25 to Tari Dr.)	0	171,872	0%	209,110	209,110	0%
Struthers Extension/Jackson Creek	2,819,967	2,674,734	105%	3,254,239	434,272	87%
Marksheffel Road Widening & Extension	486,702	2,395,917	20%	2,915,014	2,428,312	17%
S. Metro Accessibility, Phase I	10,518,591	9,674,462	109%	11,770,523	1,251,932	89%
Meridian Rd Ext. (Falcon to US 24)	75,142	394,555	19%	480,039	404,897	16%
Meridian Rd Ext. (Woodmen to Rex Drive)	189,750	986,307	19%	1,200,000	1,010,250	16%
	14,365,432	17,543,712	82%	21,344,717	6,979,285	67%
Total Capital Expenditures	39,336,134	72,992,107	54%	88,806,513	49,470,379	44%
Total Projects and Transportation expenses	65,553,609	103,028,007	64%	125,207,132	59,653,523	52%
Total Expenditures	65,883,951	103,411,632	64%	125,718,632	59,834,681	52%
Revenue Over/(Under) Expenditures	(12,005,646)	(49,782,632)	24%	(53,507,146)	(78,167,862)	22%
Carryover		52,481,570		54,320,890	54,320,890	
Net Activity including prior year carryover	(12,005,646)	2,698,938	-445%	813,744	(23,846,972)	-22%
Reserves:						
Board Appropriation of reserves	210,909	210,909	100%	210,909	0	100%
Reserve balance adjustment to 10% of budget	272,924	272,924	100%	272,924	0	100%
Replenish Reserve for prior year appropriation	(1,297,577)	(1,297,577)	100%	(1,297,577)	0	100%
Net Reserve balance adjustment	(813,744)	(813,744)	100%	(813,744)	0	100%
Net Activity Less Reserve adjustment	(\$12,819,390)	\$1,885,194	-680%	\$0	(\$12,819,390)	N/A

¹ Tax revenues from the State are received two months after the reported month. This statement includes September 2008 tax receipts.