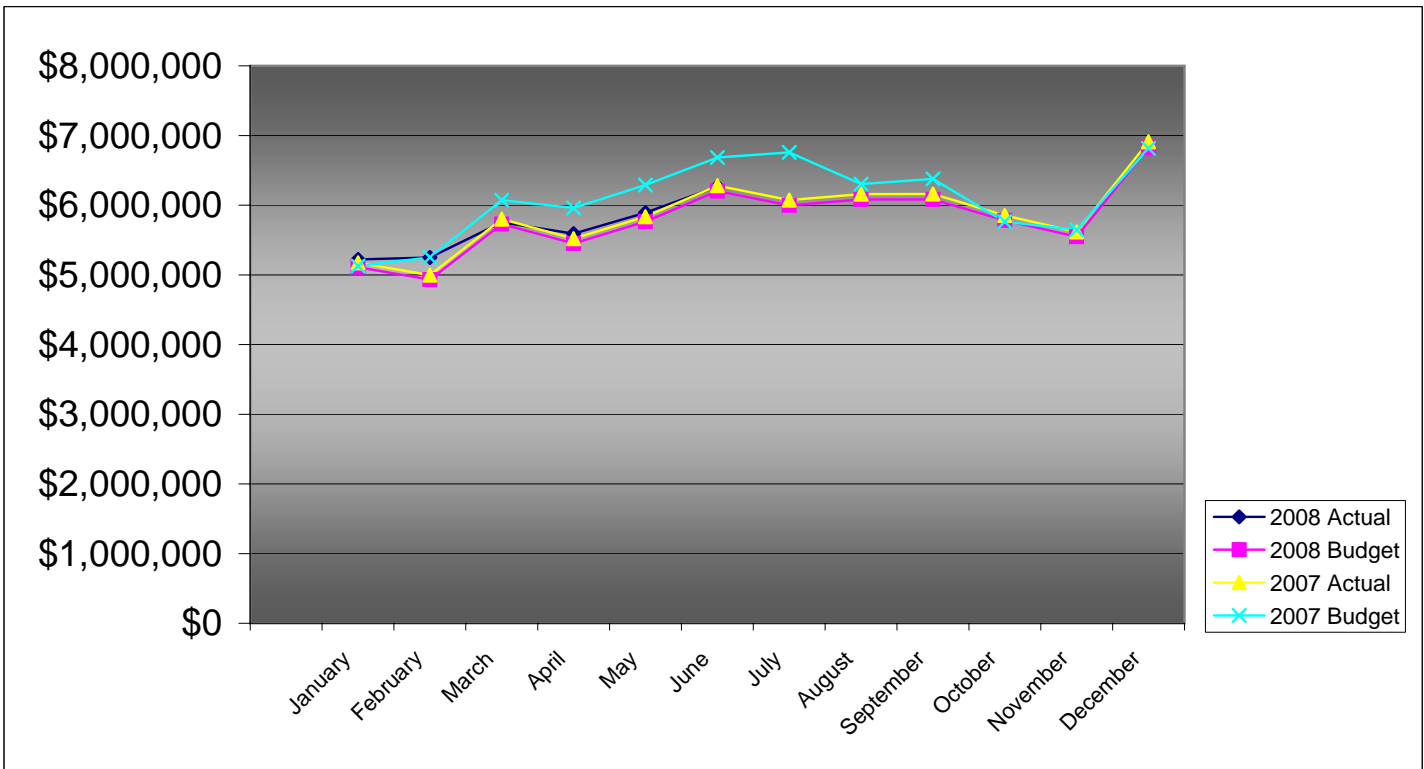


**PIKES PEAK RURAL TRANSPORTATION AUTHORITY  
2008 SALES TAX BUDGET COMPARISON TO ACTUAL**

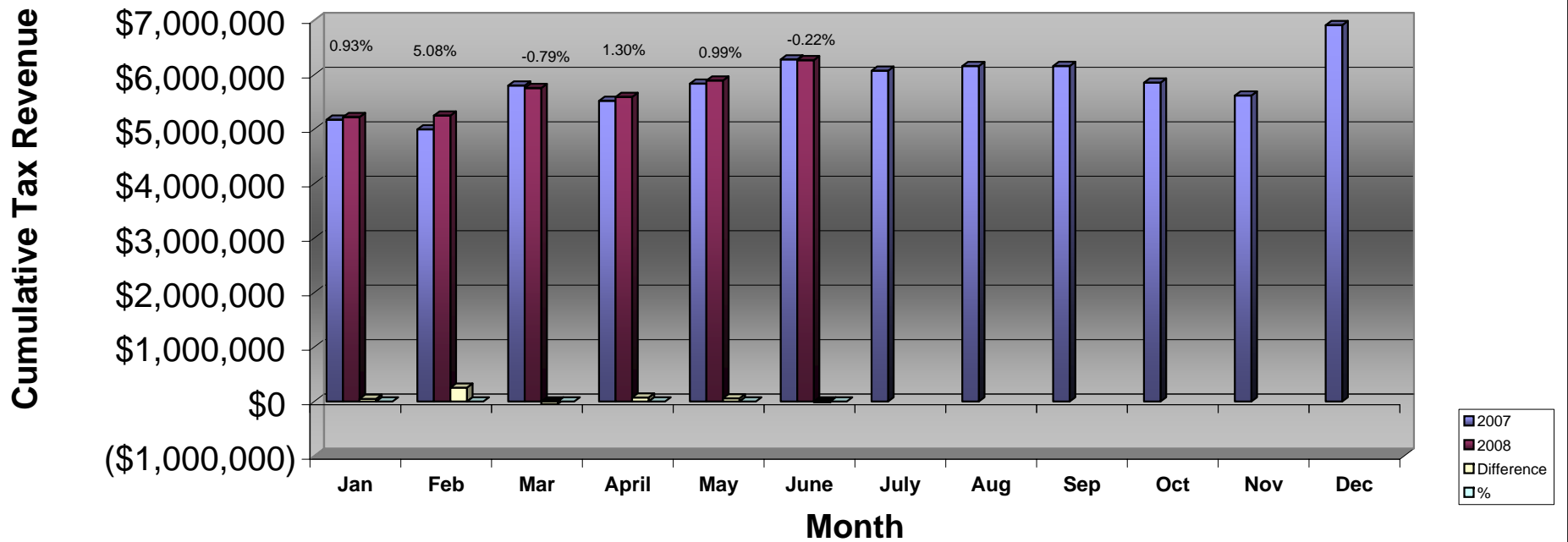
	-----Monthly-----			-----Cumulative Year-To-Date-----			2007 Actual
	Actual	Budget	Difference	Actual	Budget	Difference	
January	\$5,221,759	\$5,109,102	\$112,657	\$5,221,759	\$5,109,102	\$112,657	\$5,173,846
February	5,249,512	4,933,186	316,326	10,471,271	10,042,288	428,983	4,995,700
March	5,754,876	5,728,253	26,622	16,226,147	15,770,541	455,605	5,800,843
April	5,591,885	5,451,113	140,772	21,818,032	21,221,655	596,377	5,520,191
May	5,893,191	5,762,494	130,697	27,711,223	26,984,149	727,074	5,835,518
June	6,267,058	6,202,535	64,523	33,978,281	33,186,683	791,597	6,281,135
July		5,996,561					6,072,551
August		6,081,986					6,159,058
September		6,083,364					6,160,454
October		5,780,884					5,854,141
November		5,546,949					5,617,241
December		6,823,571					6,910,041
<b>Year Total</b>	<b>\$33,978,281</b>	<b>\$69,500,000</b>	<b>\$791,597</b>	<b>\$33,978,281</b>	<b>\$33,186,683</b>	<b>\$791,597</b>	<b>\$70,380,719</b>



**Pikes Peak RTA  
Sales and Use Tax Comparison for 2007 and 2008**

	Jan	Feb	Mar	April	May	June	July	Aug	Sep	Oct	Nov	Dec	Total
2007 Sales & Use Tax receipts	5,173,846	4,995,700	5,800,843	5,520,191	5,835,518	6,281,135	6,072,551	6,159,058	6,160,454	5,854,141	5,617,241	6,910,041	70,380,719
Use tax	494,165	398,691	431,728	414,031	494,810	519,689							2,753,114
Sales tax	4,727,594	4,850,821	5,323,148	5,177,854	5,398,381	5,747,369							31,225,167
2008 Sales & Use Tax receipts	5,221,759	5,249,512	5,754,876	5,591,885	5,893,191	6,267,058							33,978,281
\$ change 2007 to 2008	47,913	253,812	(45,967)	71,694	57,673	(14,077)							371,048
% monthly change	0.93%	5.08%	-0.79%	1.30%	0.99%	-0.22%							
Cumulative % change		2.97%	1.60%	1.52%	1.41%	1.10%							

### 2007 vs. 2008 PPRTA Tax Revenue Comparison





**Pikes Peak Rural Transportation Authority**  
**Revenue and Expense Summary**  
**For Year End December 31, 2008**  
**As of August 8, 2008**  
**Modified Cash Basis<sup>1</sup>**  
(in dollars)

	Year-to-date Actual	Year-to-date Budget	Percent of YTD Budget Complete	Annual Budget Including Carryover	Actual Difference from Budget	Percent of Budget Complete
<b>Revenue</b>						
<b>Tax Collections:</b>						
<b>Capital:</b>						
Town of Green Mountain Falls	\$4,212	\$4,112	102%	\$8,614	(\$4,402)	49%
City of Manitou Springs	21,274	20,768	102%	43,508	(22,234)	49%
City of Colorado Springs	12,351,970	12,058,089	102%	25,261,035	(12,909,065)	49%
El Paso County	6,175,985	6,029,045	102%	12,630,518	(6,454,533)	49%
	<u>18,553,441</u>	<u>18,112,013</u>	<u>102%</u>	<u>37,943,675</u>	<u>(19,390,234)</u>	<u>49%</u>
<b>Maintenance:</b>						
Town of Green Mountain Falls	19,068	18,614	102%	38,996	(19,928)	49%
City of Manitou Springs	122,873	119,949	102%	251,287	(128,414)	49%
City of Colorado Springs	8,904,345	8,692,490	102%	18,210,291	(9,305,946)	49%
El Paso County	2,760,450	2,694,773	102%	5,645,401	(2,884,951)	49%
	<u>11,806,736</u>	<u>11,525,827</u>	<u>102%</u>	<u>24,145,975</u>	<u>(12,339,239)</u>	<u>49%</u>
<b>Public Transportation</b>	<u>3,373,353</u>	<u>3,293,093</u>	<u>102%</u>	<u>6,898,850</u>	<u>(3,525,497)</u>	<u>49%</u>
<b>Administration allocation of Tax Revenue</b>	255,751	255,750	100%	511,500	(255,749)	50%
Baptist Road RTA allocation of Tax Revenue	(11,000)	0	N/A	0	(11,000)	N/A
<b>Total Tax Revenue</b>	<u><b>33,978,281</b></u>	<u><b>33,186,683</b></u>	<u>102%</u>	<u><b>69,500,000</b></u>	<u><b>(35,521,719)</b></u>	<u>49%</u>
<b>Other Revenue Sources:</b>						
Public Transportation fare revenue	664,305	287,092	231%	492,158	172,147	135%
Interest Earnings	983,676	1,166,667	84%	2,000,000	(1,016,324)	49%
<b>Gross Revenue</b>	<u><b>35,626,262</b></u>	<u><b>34,640,442</b></u>	<u>103%</u>	<u><b>71,992,158</b></u>	<u><b>(36,365,896)</b></u>	<u>49%</u>
<b>State Tax Collection Fees</b>	<u>(89,417)</u>	<u>(125,000)</u>	<u>72%</u>	<u>(250,000)</u>	<u>(160,583)</u>	<u>36%</u>
<b>Net Revenue</b>	<u><b>35,536,845</b></u>	<u><b>34,515,442</b></u>	<u>103%</u>	<u><b>71,742,158</b></u>	<u><b>(36,205,313)</b></u>	<u>50%</u>
<b>Expenditures</b>						
<b>Administrative</b>	235,983	255,750	92%	511,500	275,517	46%
<b>Public Transportation</b>	4,377,699	4,951,745	88%	8,488,706	4,111,007	52%
<b>Maintenance</b>						
Town of Green Mountain Falls	23,060	22,624	102%	40,139	17,079	57%
City of Manitou Springs	106,170	189,798	56%	336,735	230,565	32%
City of Colorado Springs	7,989,694	11,150,250	72%	19,782,476	11,792,782	40%
El Paso County	4,304,758	3,910,295	110%	6,937,542	2,632,784	62%
	<u>12,423,682</u>	<u>15,272,967</u>	<u>81%</u>	<u>27,096,892</u>	<u>14,673,210</u>	<u>46%</u>

	Year-to-date Actual	Year-to-date Budget	Percent of YTD Budget Complete	Annual Budget Including Carryover	Actual Difference from Budget	Percent of Budget Complete
<b>Capital</b>						
<i>Town of Green Mountain Falls</i>						
Ute Pass Widening	0	171,593	0%	304,435	304,435	0%
<i>City of Manitou Springs</i>						
Manitou Ave Improvements	34,622	689,530	5%	1,223,345	1,188,723	3%
<i>City of Colorado Springs</i>						
Austin Bluffs Interchange	8,278,456	8,819,086	94%	15,646,588	7,368,132	53%
S. Metro Accessibility, Phase I	2,644,697	7,789,621	34%	13,820,138	11,175,441	19%
Austin Bluffs/Nevada Improvements	0	0	N/A	0	0	N/A
I-25 Interchange Companion Projects	0	84,546	0%	150,000	150,000	0%
Fillmore/Union Improvements	0	107,494	0%	190,713	190,713	0%
Congestion/Incident Mgmt Signal Improvement <sup>2</sup>	332,605	177,266	188%	314,500	(18,105)	106%
Powers Blvd Right of Way Protection	1,526,292	2,990,430	51%	5,305,542	3,779,250	29%
Academy/Fountain Safety Improvements	0	0	N/A	0	0	N/A
Roadway Safety and Traffic Operations	131,437	808,362	16%	1,434,174	1,302,737	9%
Vincent Drive Bridge	27,661	861,349	3%	1,528,182	1,500,521	2%
Union/Palmer Park Improvements	0	2,177	0%	3,862	3,862	0%
Constitution/Chelton Rd Improvements	0	19,331	0%	34,297	34,297	0%
Pikes Peak Greenway Improvements	0	200,939	0%	356,500	356,500	0%
Woodmen Rd Widening & Interchange	150,814	9,513,775	2%	16,879,087	16,728,273	1%
On-Street Bikeway Improvements	4,653	28,182	17%	50,000	45,347	9%
Constitution/Circle Drive Improvements	81,000	534,780	15%	948,793	867,793	9%
Fillmore Street/T. Gap to Hancock	0	57,111	0%	101,324	101,324	0%
Fillmore/El Paso Street Improvements	137,676	123,563	111%	219,223	81,547	63%
Vincent Drive Extension	26,641	829,580	3%	1,471,818	1,445,177	2%
Academy Blvd./Pikes Peak Improvements	557	512	109%	909	352	61%
Cimarron Street Bridge	4,876,986	3,604,873	135%	6,395,669	1,518,683	76%
30th Street Corridor Safety Improvements <sup>2</sup>	22,757	0	N/A	0	(22,757)	N/A
	18,242,232	36,552,977	50%	64,851,319	46,609,087	28%
<i>El Paso County</i>						
Baptist-Hodgen Connection	0	0	N/A	0	0	N/A
County Line Road Upgrade	114,978	851,101	14%	1,510,000	1,395,022	8%
Hodgen Rd upgrade to Arterial	20,449	1,117,140	2%	1,982,000	1,961,551	1%
Baptist Rd Widening(I-25 to Tari Dr.)	0	1,532,094	0%	2,718,200	2,718,200	0%
Baptist Rd Widening(Mitchell Ave to I-25)	0	560,813	0%	994,980	994,980	0%
Struthers Extension/Jackson Creek <sup>2</sup>	1,765,778	680,768	259%	1,207,800	(557,978)	146%
Marksheffel Road Widening & Extension	410,654	1,588,702	26%	2,818,633	2,407,979	15%
S. Metro Accessibility, Phase I	6,765,235	4,388,959	154%	7,786,775	1,021,540	87%
Akers Drive	0	0	N/A	0	0	N/A
Meridian Rd Ext. (Falcon to US 24)	28,890	280,407	10%	497,490	468,600	6%
Meridian Rd Ext. (Woodmen to Rex Drive)	115,286	764,863	15%	1,357,000	1,241,714	8%
	9,221,270	11,764,847	78%	20,872,878	11,651,608	44%
<b>Total Capital Expenditures</b>	<b>27,498,124</b>	<b>49,178,946</b>	<b>56%</b>	<b>87,251,977</b>	<b>59,753,853</b>	<b>32%</b>
<b>Total Projects and Transportation expenses</b>	<b>44,299,505</b>	<b>69,403,658</b>	<b>64%</b>	<b>122,837,575</b>	<b>78,538,070</b>	<b>36%</b>
<b>Total Expenditures</b>	<b>44,535,488</b>	<b>69,659,408</b>	<b>64%</b>	<b>123,349,075</b>	<b>78,813,587</b>	<b>36%</b>
<b>Revenue Over/(Under) Expenditures</b>	<b>(8,998,643)</b>	<b>(35,143,966)</b>	<b>26%</b>	<b>(51,606,917)</b>	<b>(115,018,900)</b>	<b>17%</b>
<b>Carryover</b>		52,481,570		52,481,570	52,481,570	
<b>Net Activity including prior year carryover</b>	<b>(8,998,643)</b>	<b>17,337,604</b>	<b>-52%</b>	<b>874,653</b>	<b>(62,537,330)</b>	<b>-17%</b>
<b>Reserves:</b>						
Board Appropriation of reserves	150,000	150,000	100%	150,000	0	100%
Reserve balance adjustment to 10% of budget	272,924	272,924	100%	272,924	0	100%
Replenish Reserve for prior year appropriation	(1,297,577)	(1,297,577)	100%	(1,297,577)	0	100%
<b>Net Reserve balance adjustment</b>	<b>(874,653)</b>	<b>(874,653)</b>	<b>100%</b>	<b>(874,653)</b>	<b>0</b>	<b>100%</b>
<b>Net Activity Less Reserve adjustment</b>	<b>(\$9,873,296)</b>	<b>\$16,462,951</b>	<b>-60%</b>	<b>\$0</b>	<b>(\$9,873,296)</b>	<b>N/A</b>

<sup>1</sup> Tax revenues from the State are received two months after the reported month. This statement includes June 2008 tax receipts.

<sup>2</sup> Currently there is a carryover of under spent 2007 funds to cover Congestion/Incident Management, 30th Street and Struthers Ext./Jackson Creek overage in 2008.