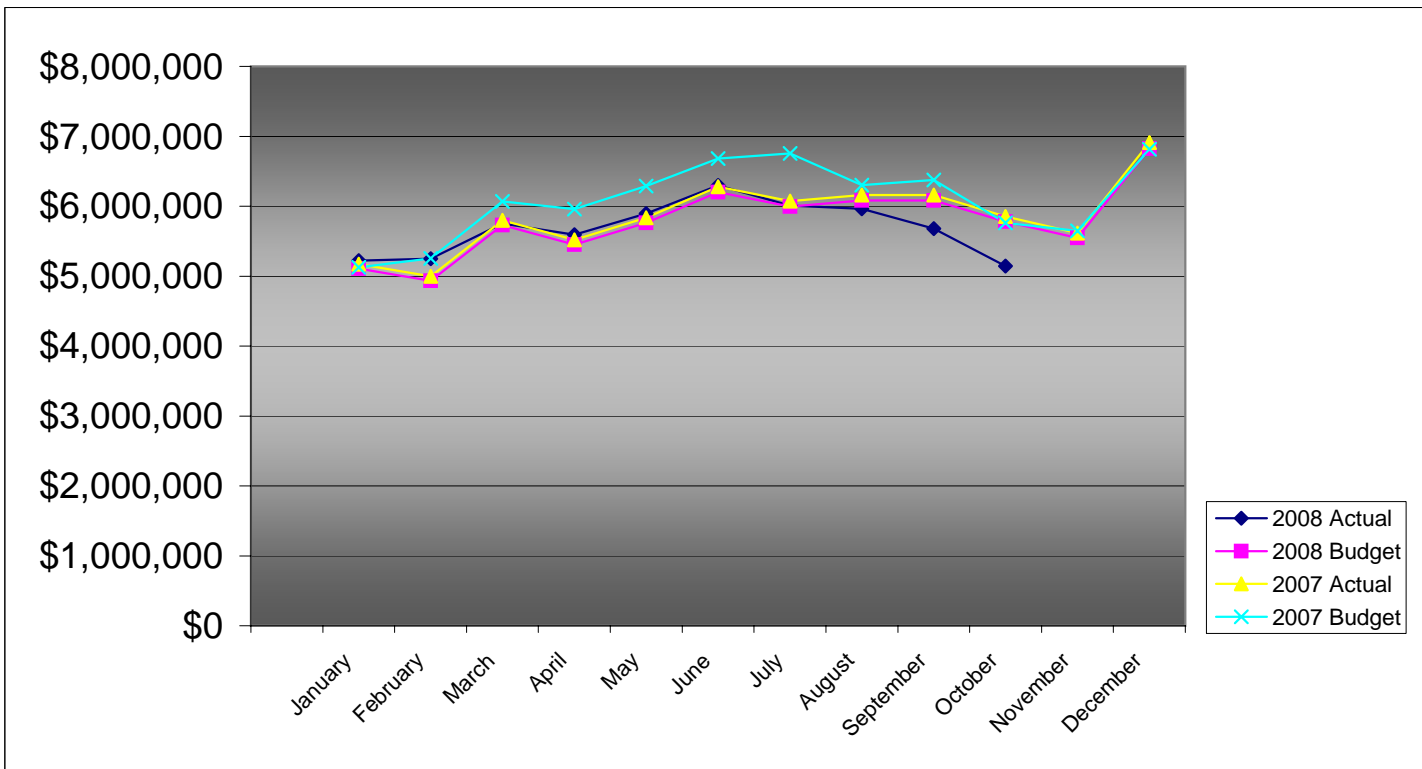


**PIKES PEAK RURAL TRANSPORTATION AUTHORITY
2008 SALES TAX BUDGET COMPARISON TO ACTUAL**

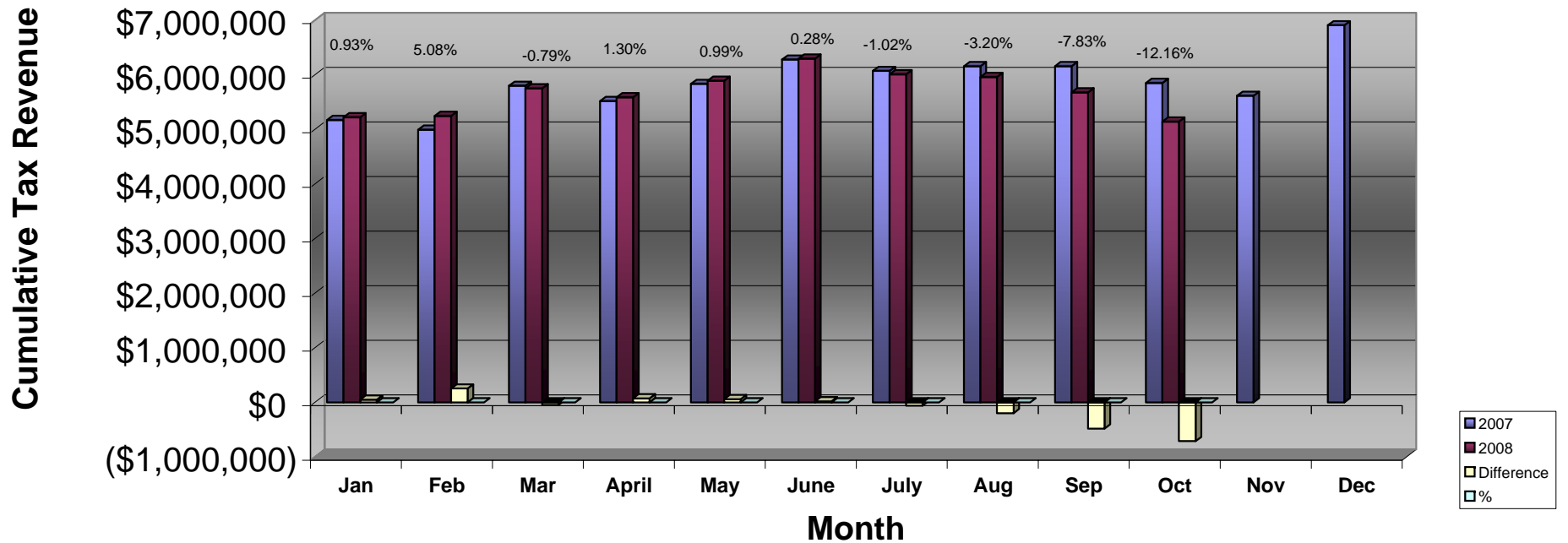
	-----Monthly-----			-----Cumulative Year-To-Date-----			2007 Actual
	Actual	Budget	Difference	Actual	Budget	Difference	
January	\$5,221,759	\$5,109,102	\$112,657	\$5,221,759	\$5,109,102	\$112,657	\$5,173,846
February	5,249,512	4,933,186	316,326	10,471,271	10,042,288	428,983	4,995,700
March	5,754,876	5,728,253	26,622	16,226,147	15,770,541	455,605	5,800,843
April	5,591,885	5,451,113	140,772	21,818,032	21,221,655	596,377	5,520,191
May	5,893,191	5,762,494	130,697	27,711,223	26,984,149	727,074	5,835,518
June	6,298,814	6,202,535	96,279	34,010,037	33,186,683	823,353	6,281,135
July	6,010,406	5,996,561	13,845	40,020,443	39,183,244	837,198	6,072,551
August	5,961,874	6,081,986	(120,112)	45,982,317	45,265,230	717,086	6,159,058
September	5,678,068	6,083,364	(405,296)	51,660,385	51,348,595	311,790	6,160,454
October	5,142,309	5,780,884	(638,575)	56,802,694	57,129,479	(326,785)	5,854,141
November		5,546,949					5,617,241
December		6,823,571					6,910,041
Year Total	\$56,802,694	\$69,500,000	(\$326,786)	\$56,802,694	\$57,129,479	(\$326,785)	\$70,380,719



**Pikes Peak RTA
Sales and Use Tax Comparison for 2007 and 2008**

	Jan	Feb	Mar	April	May	June	July	Aug	Sep	Oct	Nov	Dec	Total
2007 Sales & Use Tax receipts	5,173,846	4,995,700	5,800,843	5,520,191	5,835,518	6,281,135	6,072,551	6,159,058	6,160,454	5,854,141	5,617,241	6,910,041	70,380,719
Use tax	494,165	398,691	431,728	414,031	494,810	519,689	442,162	405,323	468,743	299,499			4,368,841
Sales tax	4,727,594	4,850,821	5,323,148	5,177,854	5,398,381	5,779,125	5,568,244	5,556,551	5,209,325	4,842,810			52,433,853
2008 Sales & Use Tax receipts	5,221,759	5,249,512	5,754,876	5,591,885	5,893,191	6,298,814	6,010,406	5,961,874	5,678,068	5,142,309			56,802,694
\$ change 2007 to 2008	47,913	253,812	(45,967)	71,694	57,673	17,679	(62,145)	(197,184)	(482,386)	(711,832)			(1,050,743)
% monthly change	0.93%	5.08%	-0.79%	1.30%	0.99%	0.28%	-1.02%	-3.20%	-7.83%	-12.16%			
Cumulative % change		2.97%	1.60%	1.52%	1.41%	1.20%	0.86%	0.31%	-0.65%	-1.82%			

2007 vs. 2008 PPRTA Tax Revenue Comparison





Pikes Peak Rural Transportation Authority
Revenue and Expense Summary
For Year End December 31, 2008
As of December 10, 2008
Modified Cash Basis¹
(in dollars)

	Year-to-date Actual	Year-to-date Budget	Percent of YTD Budget Complete	Annual Budget Including Carryover	Actual Difference from Budget	Percent of Budget Complete
Revenue						
Tax Collections:						
Capital:						
Town of Green Mountain Falls	\$7,041	\$7,080	99%	\$8,614	(\$1,573)	82%
City of Manitou Springs	35,568	35,760	99%	43,508	(7,940)	82%
City of Colorado Springs	20,651,023	20,762,623	99%	25,261,035	(4,610,012)	82%
El Paso County	10,325,511	10,381,313	99%	12,630,518	(2,305,007)	82%
	31,019,143	31,186,776	99%	37,943,675	(6,924,532)	82%
Maintenance:						
Town of Green Mountain Falls	31,879	32,052	99%	38,996	(7,117)	82%
City of Manitou Springs	205,429	206,539	99%	251,287	(45,858)	82%
City of Colorado Springs	14,887,005	14,967,455	99%	18,210,291	(3,323,286)	82%
El Paso County	4,615,144	4,640,084	99%	5,645,401	(1,030,257)	82%
	19,739,457	19,846,130	99%	24,145,975	(4,406,518)	82%
Public Transportation	5,639,844	5,670,323	99%	6,898,850	(1,259,006)	82%
Administration allocation of Tax Revenue	426,250	426,250	100%	511,500	(85,250)	83%
Baptist Road RTA allocation of Tax Revenue	(22,000)	0	N/A	0	(22,000)	N/A
Total Tax Revenue	56,802,694	57,129,479	99%	69,500,000	(12,697,306)	82%
Other Revenue Sources:						
Public Transportation fare revenue	1,146,436	881,362	130%	961,486	184,950	119%
Interest Earnings	1,361,649	1,833,333	74%	2,000,000	(638,351)	68%
Gross Revenue	59,310,779	59,844,175	99%	72,461,486	(13,150,707)	82%
State Tax Collection Fees	(144,431)	(208,333)	69%	(250,000)	(105,569)	58%
Net Revenue	59,166,348	59,635,841	99%	72,211,486	(13,045,138)	82%

Expenditures

Administrative	361,080	426,250	85%	511,500	150,420	71%
Public Transportation	7,244,363	9,431,227	77%	10,288,611	3,044,248	70%
Maintenance						
Town of Green Mountain Falls	41,652	37,558	111%	41,652	0	100%
City of Manitou Springs	336,577	306,085	110%	339,450	2,873	99%
City of Colorado Springs	14,021,612	16,543,129	85%	18,346,416	4,324,804	76%
El Paso County	6,271,847	6,658,661	94%	7,384,490	1,112,643	85%
	20,671,688	23,545,433	88%	26,112,008	5,440,320	79%

	Year-to-date Actual	Year-to-date Budget	Percent of YTD Budget Complete	Annual Budget Including Carryover	Actual Difference from Budget	Percent of Budget Complete
Capital						
<i>Town of Green Mountain Falls</i>						
Ute Pass Widening	297,861	274,408	109%	304,320	6,459	98%
<i>City of Manitou Springs</i>						
Manitou Ave Improvements	172,454	1,374,660	13%	1,524,505	1,352,051	11%
<i>City of Colorado Springs</i>						
Austin Bluffs Interchange	14,119,207	14,267,013	99%	15,822,192	1,702,985	89%
S. Metro Accessibility, Phase I	3,397,543	12,200,375	28%	13,530,280	10,132,737	25%
I-25 Interchange Companion Projects	56,720	135,256	42%	150,000	93,280	38%
Congestion/Incident Mgmt Signal Improvement	364,354	389,567	94%	432,032	67,678	84%
Powers Blvd Right of Way Protection	1,526,292	5,415,251	28%	6,005,542	4,479,250	25%
Roadway Safety and Traffic Operations	387,890	997,524	39%	1,106,259	718,369	35%
Vincent Drive Bridge	112,013	1,377,975	8%	1,528,182	1,416,169	7%
Pikes Peak Greenway Improvements	0	368,116	0%	408,243	408,243	0%
Woodmen Rd Widening & Interchange	270,682	15,228,726	2%	16,888,737	16,618,055	2%
On-Street Bikeway Improvements	25,689	164,199	16%	182,097	156,408	14%
Constitution/Circle Drive Improvements	156,493	1,140,469	14%	1,264,786	1,108,293	12%
Fillmore/El Paso Street Improvements	142,706	189,890	75%	210,589	67,883	68%
Vincent Drive Extension	110,908	1,327,152	8%	1,471,818	1,360,910	8%
Academy Blvd./Pikes Peak Improvements	557	502	111%	557	0	100%
Cimarron Street Bridge	5,344,339	5,922,326	90%	6,567,890	1,223,551	81%
30th Street Corridor Safety Improvements	22,757	57,499	40%	63,767	41,010	36%
	26,038,150	59,181,841	44%	65,632,971	39,594,821	40%
<i>El Paso County</i>						
County Line Road Upgrade	147,911	314,032	47%	348,263	200,352	42%
Hodgen Rd upgrade to Arterial	130,121	1,052,771	12%	1,167,529	1,037,408	11%
Baptist Rd Widening(I-25 to Tari Dr.)	0	188,556	0%	209,110	209,110	0%
Struthers Extension/Jackson Creek	2,819,967	2,934,377	96%	3,254,239	434,272	87%
Marksheffel Road Widening & Extension	486,702	2,628,494	19%	2,915,014	2,428,312	17%
S. Metro Accessibility, Phase I	11,399,188	10,613,587	107%	11,770,523	371,335	97%
Meridian Rd Ext. (Falcon to US 24)	122,636	432,855	28%	480,039	357,403	26%
Meridian Rd Ext. (Woodmen to Rex Drive)	191,108	1,082,051	18%	1,200,000	1,008,892	16%
	15,297,633	19,246,724	79%	21,344,717	6,047,084	72%
Total Capital Expenditures	41,806,098	80,077,633	52%	88,806,513	47,000,415	47%
Total Projects and Transportation expenses	69,722,149	113,054,292	62%	125,207,132	55,484,983	56%
Total Expenditures	70,083,229	113,480,542	62%	125,718,632	55,635,403	56%
Revenue Over/(Under) Expenditures	(10,916,881)	(53,844,701)	20%	(53,507,146)	(68,680,541)	20%
Carryover		52,481,570		54,320,890	54,320,890	
Net Activity including prior year carryover	(10,916,881)	(1,363,131)	801%	813,744	(14,359,651)	-20%
Reserves:						
Board Appropriation of reserves	210,909	210,909	100%	210,909	0	100%
Reserve balance adjustment to 10% of budget	272,924	272,924	100%	272,924	0	100%
Replenish Reserve for prior year appropriation	(1,297,577)	(1,297,577)	100%	(1,297,577)	0	100%
Net Reserve balance adjustment	(813,744)	(813,744)	100%	(813,744)	0	100%
Net Activity Less Reserve adjustment	(\$11,730,625)	(\$2,176,875)	539%	\$0	(\$11,730,625)	N/A

¹ Tax revenues from the State are received two months after the reported month. This statement includes October 2008 tax receipts.